

Ancillary Appendix
to
Identifying Effect Heterogeneity to Improve the Efficiency of Job Creation
Schemes in Germany

This appendix will not be included in the paper, but is available as additional information.

Contents

This appendix includes the results of the logit estimations for the selected target groups and the target scores in Tables 1 to 16. In addition, it contains the results of the means of the standardised biases for these groups in Table 17. Figures 1 to 6 present the checks of the balancing property of our stratification by comparing the means of the incorporated variables in the logit models for participants and nonparticipants within each stratum.

1 Results of the Participation Probability Estimation for Target Groups and Target Scores

Tab. 1: ESTIMATION RESULTS OF THE LOGIT-MODELS FOR THE PROPENSITY SCORE FOR MEN IN WEST GERMANY

Variable	Age < 25		Age > 50		Without professional training		Without work experience	
	Coeff.	S.E.	Coeff.	S.E.	Coeff.	S.E.	Coeff.	S.E.
Constant	19.2224	5.3552	<i>-43.6753</i>	20.9759	0.4978	0.3218	0.9086	0.7966
Socio-Demographic Variables								
Age	-1.8352	0.5199	<i>1.5942</i>	0.7585	-0.1449	0.0179	-0.1705	0.0472
Age(squared)	0.0390	0.0125	<i>-0.0156</i>	0.0068	0.0014	0.0002	<i>0.0014</i>	0.0006
Married	0.0387	0.1929	-0.0389	0.1291	<i>-0.1602</i>	0.0800	0.0442	0.2047
Number of children	0.0755	0.1666	-0.0547	0.0774	0.0976	0.0340	0.1014	0.1015
German	<i>0.3141</i>	0.1399	-0.0853	0.1777	0.4157	0.0754	0.0465	0.1798
Health restrictions								
No health restrictions	Ref.		Ref.		Ref.		Ref.	
Acc. DoR ¹ 80% and over	1.0806	0.5670	0.3597	0.5474	1.0216	0.2378	0.5442	0.5945
Acc. DoR, 50% to under 80%	0.4628	0.5570	<i>0.5372</i>	0.2575	0.7344	0.1806	<i>1.0699</i>	0.4172
Acc. DoR, 30% to under 50%	–	–	<i>1.2877</i>	0.5559	0.7656	0.6504	3.0225	1.0560
Acc. DoR, 30% to under 50%, no equalis. ²	–	–	0.0615	0.2890	0.0593	0.2356	0.4056	0.5639
Other health restrictions	-0.1973	0.2862	-0.0312	0.1986	-0.1524	0.1221	-0.1985	0.3172
Qualification Variables								
Professional training								
Without compl. prof. training, no CSE	Ref.		Ref.		–	–	Ref.	
Without compl. prof. training, with CSE	-0.5419	0.1213	0.2171	0.2055	–	–	-0.2807	0.1766
Industrial training	-2.0355	0.2144	0.1957	0.2135	–	–	-1.1182	0.2098
Full-time vocational school	–	–	-0.5766	0.7566	–	–	-0.9716	0.5937
Technical school	–	–	0.7335	0.3761	–	–	-1.4109	0.7459
Polytechnic	–	–	0.5298	0.4771	–	–	0.1760	0.5737
College, University	–	–	1.2210	0.3538	–	–	0.1697	0.3763
Occupational group								
Plant cultivation, breeding, fishery	-0.0987	0.2409	<i>0.5068</i>	0.2435	0.1700	0.1090	0.2699	0.2992
Mining, mineral extraction	–	–	–	–	-0.3894	0.5229	<i>1.6121</i>	0.8025
Manufacturing	Ref.		Ref.		Ref.		Ref.	
Technical professions	-0.4096	1.0465	-0.2693	0.2824	-0.4265	0.3578	-0.3647	0.3876
Service professions	-0.4072	0.1344	-0.4416	0.1363	-0.3708	0.0682	-0.1020	0.1635
Other professions	-0.3725	0.2166	-1.7136	1.0186	0.0605	0.1724	-0.0556	0.2798
Professional rank								
Worker, not skilled worker	Ref.		Ref.		Ref.		Ref.	
Worker, skilled worker	-0.9983	0.3401	-0.6198	0.2054	-0.2760	0.1456	-0.5143	0.4088
White-collar worker, simple occupations	0.1994	0.3773	-0.2276	0.2518	-0.3988	0.2080	0.6075	0.3716
White-collar worker, advanced occupations	1.4763	1.0867	-0.5604	0.3153	0.0212	0.3928	1.2666	0.4649
Other	<i>0.3160</i>	0.1296	-0.5193	0.1477	-0.0628	0.0665	0.2073	0.1897
Qualification (with work experience)	<i>-0.3040</i>	0.1245	0.4182	0.4037	-0.3672	0.0945	–	–
Career Variables								
Duration of last employment (months)	<i>-0.0136</i>	0.0062	-0.0045	0.0007	-0.0048	0.0007	-0.0010	0.0020
Duration of unemployment (weeks)								
Up to 13 weeks	Ref.		Ref.		Ref.		Ref.	
Between 13 and 52 weeks	-0.1889	0.1179	0.0003	0.1684	0.0588	0.0761	-0.2072	0.1622
More than 52 weeks	0.7101	0.2177	-0.7455	0.1634	0.3454	0.0853	0.5780	0.2070
Number of placement propositions	0.0609	0.0107	0.0849	0.0077	0.0518	0.0039	0.0690	0.0104
Last contact to job center (weeks)	<i>-0.1044</i>	0.0424	0.0725	0.0248	-0.0733	0.0186	-0.0422	0.0436
Rehabilitation attendant	0.4729	0.3783	0.0499	0.2767	-0.4860	0.1826	-0.1064	0.3513
Placement restrictions	-0.0452	0.3690	<i>-0.4378</i>	0.2095	-0.1973	0.1389	-0.3973	0.3343
Programme before unemployment								
No further education or programme	Ref.		Ref.		Ref.		Ref.	
Further education compl., cont. education	-0.4245	0.3299	0.1782	0.2440	0.0688	0.1108	-0.0664	0.2518
Further education compl., voc. adjustment	1.2458	0.6416	1.2807	0.4213	0.5829	0.3074	–	–
Job-preparative measure	-0.5547	1.0609	–	–	-0.6492	1.0378	–	–
Job creation scheme	1.6855	0.2160	2.0873	0.1748	1.9736	0.0974	2.0412	0.2784
Rehabilitation measure	-0.7142	0.8680	–	–	0.1987	0.4158	0.6798	0.4625
Regional Context Variables								
Cluster II	<i>0.4709</i>	0.1986	-0.3371	0.1723	-0.0203	0.0972	0.2019	0.2716
Cluster III	0.6413	0.1906	-0.2342	0.1699	-0.0732	0.0981	0.2807	0.2715
Cluster IV	0.9096	0.2530	-0.1870	0.2316	0.0923	0.1329	0.5891	0.3539
Cluster V	Ref.		Ref.		Ref.		Ref.	

Bold letters indicate significance at the 1% level. *Italic* letters refer to the 5% level. – not included in the estimation/ no observation. Ref. denotes the reference category.

¹ DoR = Degree of restriction

² People with accepted degree of restriction, but no equalisation to other persons with the same DoR.

Tab. 2: ESTIMATION RESULTS OF THE LOGIT-MODELS FOR THE PROPENSITY SCORE FOR MEN IN WEST GERMANY

Variable	Long-term unemployed		More than 5 plac. prop.		Vocational rehabilitation		Placement restr.	
	Coeff.	S.E.	Coeff.	S.E.	Coeff.	S.E.	Coeff.	S.E.
Constant	-3.4319	0.6632	-3.0821	0.5156	-0.2817	1.5120	-1.7075	1.0243
Socio-Demographic Variables								
Age	0.1343	0.0322	0.0497	0.0264	-0.0089	0.0785	0.0604	0.0458
Age(squared)	-0.0022	0.0004	-0.0006	0.0003	-0.0003	0.0010	<i>-0.0011</i>	0.0005
Married	-0.0299	0.0935	0.0156	0.0864	-0.0380	0.2723	-0.2144	0.1507
Number of children	0.0400	0.0416	0.0415	0.0380	-0.1511	0.1534	0.0570	0.0745
German	0.3684	0.1124	0.3881	0.1053	0.0846	0.4137	0.3481	0.2152
Health restrictions								
No health restrictions	Ref.		Ref.		Ref.		Ref.	
Acc. DoR ¹ , 80% and over	0.7115	0.2666	0.8719	0.3054	–	–	-0.5085	0.4461
Acc. DoR, 50% to under 80%	0.6035	0.1927	1.0262	0.1931	-0.3366	0.3719	-0.5368	0.4159
Acc. DoR, 30% to under 50%	0.7528	0.6132	0.5902	0.6946	0.4220	0.6799	–	–
Acc. DoR, 30% to under 50%, no equalis. ²	<i>0.4390</i>	0.2075	0.6419	0.2142	<i>-0.8671</i>	0.4378	-1.2335	0.4444
Other health restrictions	-0.1283	0.1327	-0.0250	0.1246	-1.3746	0.3405	-1.4093	0.4097
Qualification Variables								
Professional training								
Without compl. prof. training, no CSE	Ref.		Ref.		Ref.		Ref.	
Without compl. prof. training, with CSE	-0.1748	0.1003	<i>-0.2001</i>	0.0954	-0.0945	0.3512	-0.1272	0.1670
Industrial training	-0.2282	0.1082	-0.4294	0.1004	0.0491	0.3290	-0.2994	0.1700
Full-time vocational school	-0.4562	0.4059	-0.2681	0.3126	0.9032	0.7261	-0.7384	0.6508
Technical school	-0.2446	0.3231	0.0112	0.2594	0.6162	0.7099	0.4007	0.4501
Polytechnic	0.3810	0.3187	0.5062	0.2751	–	–	1.0165	1.0994
College, University	<i>0.5130</i>	0.2410	0.1574	0.2472	–	–	-0.0780	1.0816
Occupational group								
Plant cultivation, breeding, fishery	0.2409	0.1515	<i>0.2631</i>	0.1319	0.5692	0.4419	0.0848	0.2380
Mining, mineral extraction	-0.4042	0.6084	-0.6981	1.0886	–	–	–	–
Manufacturing	Ref.		Ref.		Ref.		Ref.	
Technical professions	-0.2679	0.2184	<i>-0.4379</i>	0.2124	-0.1689	0.5774	-0.9056	0.5052
Service professions	-0.3318	0.0840	-0.3393	0.0791	-0.0619	0.2315	-0.3566	0.1284
Other professions	-0.1265	0.3543	-0.3269	0.3786	-0.4286	0.5426	<i>-0.7632</i>	0.3577
Professional rank								
Worker, not skilled worker	Ref.		Ref.		Ref.		Ref.	
Worker, skilled worker	-0.3017	0.1592	-0.3710	0.1308	-0.4078	0.4221	-0.2729	0.2407
White-collar worker, simple occupations	-0.1964	0.1931	0.1210	0.1582	0.0609	0.6174	0.0401	0.3178
White-collar worker, advanced occupations	-0.4424	0.2336	0.2259	0.2207	-0.1126	1.0978	-0.2111	0.6009
Other	-0.3765	0.0884	-0.0569	0.0824	-0.2908	0.2805	-0.2594	0.1448
Qualification (with work experience)	-0.3806	0.1323	-0.2136	0.1291	-0.1053	0.2895	-0.1547	0.2074
Career Variables								
Duration of last employment (months)	-0.0041	0.0006	-0.0018	0.0009	-0.0031	0.0023	-0.0045	0.0011
Duration of unemployment (weeks)								
Up to 13 weeks	–	–	Ref.		Ref.		Ref.	
Between 13 and 52 weeks	–	–	0.1815	0.0947	-0.3252	0.2785	-0.2131	0.1642
More than 52 weeks	–	–	0.0554	0.0983	-0.5193	0.2829	-0.4451	0.1620
Number of placement propositions	0.0376	0.0044	–	–	0.0466	0.0129	0.0645	0.0069
Last contact to job center (weeks)	0.0003	0.0157	0.0575	0.0166	0.0195	0.0554	0.0030	0.0296
Rehabilitation attendant	<i>-0.4055</i>	0.1786	-0.3357	0.1743	–	–	-0.2406	0.1419
Placement restrictions	-0.4780	0.1442	-0.1814	0.1411	-0.4808	0.2471	–	–
Programme before unemployment								
No further education or programme	Ref.		Ref.		Ref.		Ref.	
Further education compl., cont. education	0.1148	0.1231	0.0099	0.1057	<i>0.8633</i>	0.3785	0.3985	0.2114
Further education compl., voc. adjustment	0.3810	0.3328	0.6754	0.2618	0.9562	0.8129	-0.1987	0.6269
Job-preparative measure	–	–	–	–	–	–	–	–
Job creation scheme	1.2748	0.1195	1.7545	0.1039	2.3799	0.3687	2.4849	0.1771
Rehabilitation measure	-0.3715	0.4346	-0.2587	0.4404	0.1933	0.3239	-0.4136	0.4035
Regional Context Variables								
Cluster II	-0.5906	0.1182	<i>-0.2395</i>	0.1064	<i>-0.7510</i>	0.3158	-0.5914	0.1775
Cluster III	-0.5332	0.1211	<i>-0.2596</i>	0.1061	-0.5817	0.2976	-0.4404	0.1707
Cluster IV	-0.1169	0.1613	-0.1289	0.1458	0.1469	0.3827	-0.0153	0.2310
Cluster V	Ref.		Ref.		Ref.		Ref.	

Bold letters indicate significance at the 1% level. *Italic* letters refer to the 5% level. – not included in the estimation/ no observation. Ref. denotes the reference category.

¹ DoR = Degree of restriction

² People with accepted degree of restriction, but no equalisation to other persons with the same DoR.

Tab. 3: ESTIMATION RESULTS OF THE LOGIT-MODELS FOR THE PROPENSITY SCORE FOR MEN IN WEST GERMANY

Variable	ALMP part.		Target Score=0		Target Score=1		Target Score=2	
	Coeff.	S.E.	Coeff.	S.E.	Coeff.	S.E.	Coeff.	S.E.
Constant	-1.1523	0.6245	-12.7292	5.2292	-9.5376	1.3108	-3.1125	0.6067
Socio-Demographic Variables								
Age	0.0022	0.0318	0.4404	0.2683	0.2551	0.0596	0.0216	0.0308
Age(squared)	-0.0001	0.0004	-0.0044	0.0034	-0.0030	0.0007	-0.0007	0.0004
Married	-0.0473	0.1167	-1.1781	0.4002	-0.4564	0.1569	-0.0951	0.1049
Number of children	-0.0607	0.0569	-0.0085	0.2005	0.1943	0.0653	0.0563	0.0490
German	<i>0.3607</i>	0.1521	-0.7306	0.4188	0.6747	0.2091	0.6053	0.1152
Health restrictions								
No health restrictions	Ref.		Ref.		Ref.		Ref.	
Acc. DoR, ¹ 80% and over	1.2038	0.3569	–	–	<i>1.1736</i>	0.5110	0.1174	0.5047
Acc. DoR, 50% to under 80%	0.8403	0.2372	0.8950	1.1553	1.1693	0.3166	0.8766	0.2375
Acc. DoR, 30% to under 50%	1.5702	0.5424	–	–	1.4680	1.0473	0.8693	0.6953
Acc. DoR, 30% to under 50%, no equalis. ²	0.7426	0.2627	–	–	0.0180	0.5254	0.2812	0.3021
Other health restrictions	-0.0598	0.1701	-0.2893	0.6209	-0.1991	0.2452	-0.0052	0.1478
Qualification Variables								
Professional training								
Without compl. prof. training, no CSE	Ref.		Ref.		Ref.		Ref.	
Without compl. prof. training, with CSE	<i>-0.2901</i>	0.1233	–	–	-0.7805	0.2322	-0.4602	0.1046
Industrial training	-0.4386	0.1317	-1.3327	0.7054	0.0507	0.2526	<i>-0.3343</i>	0.1485
Full-time vocational school	<i>-1.1618</i>	0.5301	–	–	0.2700	0.5206	-0.1708	0.4250
Technical school	0.0174	0.3089	-0.1781	0.8019	0.7426	0.3997	0.2159	0.3149
Polytechnic	0.6798	0.3511	–	–	<i>1.0705</i>	0.4461	0.9360	0.3205
College, University	0.4395	0.2963	0.0461	0.7112	0.7425	0.3807	0.7509	0.2749
Occupational group								
Plant cultivation, breeding, fishery	<i>0.3444</i>	0.1555	<i>1.1522</i>	0.4853	0.0668	0.2894	0.5773	0.1511
Mining, mineral extraction	0.7208	0.5750	–	–	–	–	-0.4393	0.7264
Manufacturing	Ref.		Ref.		Ref.		Ref.	
Technical professions	-1.0490	0.2980	-1.4744	0.8222	-0.9471	0.3448	-0.4577	0.2415
Service professions	-0.3799	0.1058	-0.6599	0.3811	-0.2307	0.1433	-0.2812	0.0926
Other professions	-0.4823	0.4468	1.2718	1.1861	-0.0689	0.5340	0.2322	0.2657
Professional rank								
Worker, not skilled worker	Ref.		Ref.		Ref.		Ref.	
Worker, skilled worker	<i>-0.4017</i>	0.1967	-0.9997	0.4991	-0.6029	0.2295	-0.4647	0.1637
White-collar worker, simple occupations	0.0948	0.2312	-0.1965	0.5315	0.1456	0.2420	-0.2424	0.2119
White-collar worker, advanced occupations	0.0816	0.2888	-0.1395	0.6067	0.3616	0.3252	-0.0408	0.2406
Other	-0.7330	0.1050	-0.4018	0.3748	-0.0203	0.1547	-0.0289	0.0936
Qualification (with work experience)	-0.0088	0.1505	–	–	0.5903	0.4101	0.6133	0.1955
Career Variables								
Duration of last employment (months)	-0.0059	0.0014	-0.0051	0.0037	-0.0054	0.0013	-0.0040	0.0007
Duration of unemployment (weeks)								
Up to 13 weeks	Ref.		Ref.		Ref.		Ref.	
Between 13 and 52 weeks	-0.3224	0.1194	1.0955	0.3335	0.9276	0.1498	-0.0073	0.0994
More than 52 weeks	-0.5737	0.1241	–	–	<i>0.5773</i>	0.2612	0.0192	0.1414
Number of placement propositions	0.0268	0.0056	0.3188	0.0820	0.0354	0.0095	0.0229	0.0062
Last contact to job center (weeks)	0.0372	0.0225	-0.1381	0.1047	-0.0360	0.0381	0.0174	0.0207
Rehabilitation attendant	<i>-0.4080</i>	0.1929	–	–	-0.8100	1.0488	-0.1955	0.3191
Placement restrictions	-0.0933	0.1821	–	–	<i>-0.9641</i>	0.4065	-0.7972	0.2152
Programme before unemployment								
No further education or programme	–	–	–	–	Ref.		Ref.	
Further education compl., cont. education	–	–	–	–	-0.0058	0.3441	-0.0937	0.1750
Further education compl., voc. adjustment	–	–	–	–	–	–	0.1002	0.6361
Job-preparative measure	–	–	–	–	–	–	–	–
Job creation scheme	–	–	–	–	3.5543	0.4890	2.5153	0.2058
Rehabilitation measure	–	–	–	–	–	–	-0.2777	0.7435
Regional Context Variables								
Cluster II	-0.1859	0.1521	0.3537	0.4333	-0.5475	0.1710	-0.2403	0.1240
Cluster III	-0.0564	0.1482	0.0459	0.4370	-0.5184	0.1667	-0.1566	0.1220
Cluster IV	0.0737	0.2300	-0.0873	0.7085	<i>-0.5733</i>	0.2596	0.1244	0.1616
Cluster V	Ref.		Ref.		Ref.		Ref.	

Bold letters indicate significance at the 1% level. *Italic* letters refer to the 5% level.– not included in the estimation/ no observation. Ref. denotes the reference category.

¹ DoR = Degree of restriction

² People with accepted degree of restriction, but no equalisation to other persons with the same DoR.

Tab. 4: ESTIMATION RESULTS OF THE LOGIT-MODELS FOR THE PROPENSITY SCORE FOR MEN IN WEST GERMANY

Variable	Target Score=3		Target Score=4		Target Score=5	
	Coeff.	S.E.	Coeff.	S.E.	Coeff.	S.E.
Constant	-2.4589	0.5681	-3.5758	0.9300	-2.1657	1.8925
Socio-Demographic Variables						
Age	0.0912	0.0339	0.1577	0.0573	0.1973	0.1109
Age(squared)	-0.0016	0.0004	-0.0024	0.0007	<i>-0.0031</i>	0.0014
Married	-0.0051	0.1141	0.0522	0.1765	-0.0896	0.3203
Number of children	0.0393	0.0510	0.0397	0.0805	-0.2176	0.1846
German	0.3926	0.1183	0.1095	0.2035	-0.1647	0.3963
Health restrictions						
No health restrictions	Ref.		Ref.		Ref.	
Acc. DoR, ¹ 80% and over	1.0874	0.2967	0.5722	0.4630	1.2702	0.8358
Acc. DoR, 50% to under 80%	<i>0.5096</i>	0.2459	0.6399	0.3544	0.9301	0.7090
Acc. DoR, 30% to under 50%	0.3038	0.8097	0.7255	1.1258	<i>2.5090</i>	1.0776
Acc. DoR, 30% to under 50%, no equalis. ²	0.2459	0.2773	-0.2344	0.4507	1.1759	0.7405
Other health restrictions	-0.2496	0.1733	-0.1448	0.2881	0.2110	0.6186
Qualification Variables						
Professional training						
Without compl. prof. training, no CSE	Ref.		Ref.		Ref.	
Without compl. prof. training, with CSE	-0.3482	0.1033	0.0280	0.1680	-0.0480	0.2986
Industrial training	-0.1975	0.1597	<i>0.5679</i>	0.2581	0.4361	0.4696
Full-time vocational school	-1.4002	1.0332	0.2420	0.8111	2.4643	1.4494
Technical school	0.1022	0.4480	-0.0808	1.0874	2.1555	1.1949
Polytechnic	-0.3408	0.6082	<i>2.3560</i>	1.1117	–	–
College, University	0.5084	0.4149	1.2067	0.7381	–	–
Occupational group						
Plant cultivation, breeding, fishery	-0.0388	0.1810	0.0657	0.2472	-0.0282	0.4276
Mining, mineral extraction	-0.4361	0.7592	-0.0155	1.1016	–	–
Manufacturing	Ref.		Ref.		Ref.	
Technical professions	-0.5321	0.3738	0.3709	0.4497	-1.4005	1.2338
Service professions	-0.3095	0.0980	-0.3555	0.1573	<i>-0.6175</i>	0.2805
Other professions	-0.0743	0.2382	-0.3854	0.5079	-0.4427	0.7944
Professional rank						
Worker, not skilled worker	Ref.		Ref.		Ref.	
Worker, skilled worker	-0.3613	0.1989	-0.0174	0.3152	0.4018	0.5675
White-collar worker, simple occupations	0.2734	0.2302	0.1069	0.3997	-0.6239	1.2415
White-collar worker, advanced occupations	-0.1799	0.3804	-1.2395	0.9251	0.2825	1.3117
Other	-0.1259	0.1017	-0.0713	0.1661	-0.1103	0.2988
Qualification (with work experience)	0.0637	0.1496	0.4275	0.2307	<i>0.7607</i>	0.3788
Career Variables						
Duration of last employment (months)	-0.0059	0.0010	-0.0050	0.0017	-0.0013	0.0027
Duration of unemployment (weeks)						
Up to 13 weeks	Ref.		Ref.		Ref.	
Between 13 and 52 weeks	-0.3681	0.1248	-0.0213	0.2392	<i>-1.6015</i>	0.6220
More than 52 weeks	-0.6417	0.1526	-1.4310	0.2597	-2.0825	0.4928
Number of placement propositions	0.0211	0.0068	0.0299	0.0098	0.0004	0.0224
Last contact to job center (weeks)	-0.0125	0.0218	0.0183	0.0324	-0.0655	0.0633
Rehabilitation attendant	<i>-0.5750</i>	0.2396	-1.2044	0.2710	-1.1681	0.3849
Placement restrictions	-0.7584	0.2021	-0.6125	0.3177	-1.0170	0.5829
Programme before unemployment						
No further education or programme	Ref.		Ref.		Ref.	
Further education compl., cont. education	-0.5632	0.1636	<i>-0.5002</i>	0.2471	-1.3990	0.5166
Further education compl., voc. adjustment	-0.2795	0.4511	0.2555	0.4139	-0.5763	0.7766
Job-preparative measure	-0.6283	1.0551	–	–	–	–
Job creation scheme	1.6530	0.1593	1.0649	0.2346	1.1016	0.3930
Rehabilitation measure	-0.5505	0.5395	<i>-1.3360</i>	0.6290	-0.7736	0.5631
Regional Context Variables						
Cluster II	-0.2225	0.1396	-0.2073	0.2278	0.2153	0.5174
Cluster III	<i>-0.2891</i>	0.1416	-0.0992	0.2271	0.6268	0.5070
Cluster IV	-0.0858	0.1923	0.0780	0.3204	0.9152	0.6355
Cluster V	Ref.		Ref.		Ref.	

Bold letters indicate significance at the 1% level. *Italic* letters refer to the 5% level. – not included in the estimation/ no observation. Ref. denotes the reference category.

¹ DoR = Degree of restriction

² People with accepted degree of restriction, but no equalisation to other persons with the same DoR.

Tab. 5: ESTIMATION RESULTS OF THE LOGIT-MODELS FOR THE PROPENSITY SCORE FOR WOMEN IN WEST GERMANY

Variable	Age < 25		Age > 50		Without professional training		Without work experience	
	Coeff.	S.E.	Coeff.	S.E.	Coeff.	S.E.	Coeff.	S.E.
Constant	10.6581	7.8807	-111.2167	43.0028	-0.8437	0.5601	-0.7924	1.1611
Socio-Demographic Variables								
Age	-0.9888	0.7691	4.0834	1.5741	-0.0851	0.0311	-0.1003	0.0656
Age(squared)	0.0184	0.0187	-0.0391	0.0144	0.0005	0.0004	0.0007	0.0009
Married	0.0682	0.2379	-0.5664	0.1796	-0.3669	0.1148	-0.2893	0.2401
Number of children	-0.4780	0.3609	0.0783	0.1876	<i>-0.1465</i>	0.0694	-0.2055	0.1641
German	-0.0050	0.2242	0.0165	0.3582	<i>0.2934</i>	0.1419	-0.1205	0.2679
Health restrictions								
No health restrictions	Ref.		Ref.		Ref.		Ref.	
Acc. DoR, ¹ 80% and over	2.7825	0.6054	<i>1.5175</i>	0.6174	1.2836	0.3801	1.7312	0.6289
Acc. DoR, 50% to under 80%	1.1635	0.8207	0.1760	0.4324	<i>0.6874</i>	0.2895	<i>1.2989</i>	0.5372
Acc. DoR, 30% to under 50%	–	–	1.5630	0.8197	1.9682	0.5949	–	–
Acc. DoR, 30% to under 50%, no equalis. ²	–	–	0.1916	0.4326	<i>-0.3593</i>	0.4512	0.1477	1.0737
Other health restrictions	<i>0.8537</i>	0.3558	-0.1662	0.2842	-0.1738	0.2042	0.3157	0.4104
Qualification Variables								
Professional training								
Without compl. prof. training, no CSE	Ref.		Ref.		–	–	Ref.	
Without compl. prof. training, with CSE	-0.3774	0.2346	0.8822	0.5569	–	–	-0.3371	0.3300
Industrial training	-1.4577	0.3249	0.8080	0.5650	–	–	-0.7344	0.3825
Full-time vocational school	-0.9174	0.5927	0.1838	0.8561	–	–	-0.2524	0.5664
Technical school	0.2209	0.5662	0.6720	0.7545	–	–	0.2984	0.5765
Polytechnic	–	–	-0.3876	1.0902	–	–	1.6320	0.5228
College, University	–	–	1.8171	0.6672	–	–	<i>1.1050</i>	0.4366
Occupational group								
Plant cultivation, breeding, fishery	-0.0887	0.5347	–	–	0.2196	0.3147	0.3226	0.6791
Mining, mineral extraction	–	–	–	–	–	–	–	–
Manufacturing	Ref.		Ref.		Ref.		Ref.	
Technical professions	–	–	1.5068	0.5151	0.7829	0.4845	-0.2706	0.8026
Service professions	-0.1598	0.2175	0.4405	0.2812	0.2270	0.1204	0.5290	0.3048
Other professions	-0.2963	0.3708	-0.2078	1.0569	0.2886	0.2952	0.5474	0.4525
Professional rank								
Worker, not skilled worker	Ref.		Ref.		Ref.		Ref.	
Worker, skilled worker	-0.2388	0.5168	0.1499	0.4686	-0.3179	0.3433	0.4922	0.5298
White-collar worker, simple occupations	-0.0900	0.3411	0.3606	0.3008	-0.0422	0.1846	-0.1878	0.4352
White-collar worker, advanced occupations	0.1511	0.8479	-0.0164	0.4366	0.9614	0.2916	-0.0541	0.5886
Other	0.2885	0.2316	0.0051	0.2773	0.0706	0.1281	0.1383	0.3228
Qualification (with work experience)	-0.5454	0.1863	0.4637	0.5544	-0.5000	0.1412	–	–
Career Variables								
Duration of last employment (months)	-0.0093	0.0084	-0.0031	0.0011	-0.0044	0.0012	-0.0071	0.0050
Duration of unemployment (weeks)								
Up to 13 weeks	Ref.		Ref.		Ref.		Ref.	
Between 13 and 52 weeks	-0.1991	0.1810	-0.4244	0.2586	-0.0510	0.1269	-0.1168	0.2131
More than 52 weeks	0.3524	0.3344	-0.7664	0.2476	-0.0150	0.1442	-0.1482	0.2824
Number of placement propositions	0.0681	0.0158	0.0869	0.0100	0.0523	0.0068	0.0586	0.0143
Last contact to job center (weeks)	0.0315	0.0592	<i>0.0881</i>	0.0388	0.0311	0.0279	0.0087	0.0557
Rehabilitation attendant	0.7018	0.5635	-0.0673	0.5776	0.1092	0.3094	0.1244	0.5039
Placement restrictions	<i>-1.1975</i>	0.4925	-0.3778	0.3115	-0.2301	0.2279	-0.3234	0.4479
Programme before unemployment								
No further education or programme	Ref.		Ref.		Ref.		Ref.	
Further education compl., cont. education	0.4239	0.4510	1.0261	0.2656	0.5548	0.1622	-0.4605	0.3826
Further education compl., voc. adjustment	–	–	0.7044	1.0477	–	–	–	–
Job-preparative measure	2.5023	0.6643	–	–	2.4653	0.5620	2.3640	1.4426
Job creation scheme	2.9243	0.3941	3.0391	0.2624	2.9377	0.1698	3.3938	0.3609
Rehabilitation measure	0.6365	0.9236	2.5011	0.8859	-0.6581	1.0570	1.0536	0.6708
Regional Context Variables								
Cluster II	-0.4451	0.2672	-0.8248	0.2309	-0.4691	0.1438	-0.4169	0.2842
Cluster III	0.0718	0.2440	-0.6931	0.2260	-0.4339	0.1407	-0.2347	0.2810
Cluster IV	-0.1442	0.3898	-1.6149	0.4328	<i>-0.4885</i>	0.2154	-0.4429	0.4665
Cluster V	Ref.		Ref.		Ref.		Ref.	

Bold letters indicate significance at the 1% level. *Italic* letters refer to the 5% level. – not included in the estimation/ no observation. Ref. denotes the reference category.

¹ DoR = Degree of restriction

² People with accepted degree of restriction, but no equalisation to other persons with the same DoR.

Tab. 6: ESTIMATION RESULTS OF THE LOGIT-MODELS FOR THE PROPENSITY SCORE FOR WOMEN IN WEST GERMANY

Variable	Long-term unemployed		More than 5 plac. prop.		Vocational rehabilitation		Placement restr.	
	Coeff.	S.E.	Coeff.	S.E.	Coeff.	S.E.	Coeff.	S.E.
Constant	-5.4332	1.0102	-4.5914	0.8809	-1.8893	2.7422	<i>-3.9176</i>	1.5800
Socio-Demographic Variables								
Age	0.1365	0.0493	0.0842	0.0437	0.1097	0.1299	0.0602	0.0705
Age(squared)	-0.0022	0.0006	<i>-0.0011</i>	0.0005	-0.0020	0.0017	-0.0014	0.0009
Married	-0.6957	0.1200	-0.4723	0.1194	-0.0295	0.3923	-0.0755	0.2066
Number of children	0.0570	0.0661	0.0222	0.0669	-0.8314	0.4903	-0.0077	0.1311
German	0.0420	0.1998	0.1781	0.2087	0.8757	1.0601	<i>1.8635</i>	0.7347
Health restrictions								
No health restrictions	Ref.		Ref.		Ref.		Ref.	
Acc. DoR ¹ , 80% and over	0.4078	0.4406	1.3298	0.4492	<i>-2.2439</i>	1.0308	–	–
Acc. DoR, 50% to under 80%	-0.0672	0.3305	<i>0.7595</i>	0.2962	<i>-1.7208</i>	0.8585	-0.5676	0.3247
Acc. DoR, 30% to under 50%	1.6529	0.6050	2.7754	0.7771	–	–	0.8967	0.5438
Acc. DoR, 30% to under 50%, no equalis. ²	-0.2535	0.4141	0.2761	0.4160	<i>-2.3093</i>	0.9412	-0.7913	0.4051
Other health restrictions	-0.4034	0.2340	-0.1980	0.2209	-2.4023	0.8109	-1.5582	0.3006
Qualification Variables								
Professional training								
Without compl. prof. training, no CSE	Ref.		Ref.		Ref.		Ref.	
Without compl. prof. training, with CSE	<i>0.4642</i>	0.2172	<i>0.4938</i>	0.2328	0.4518	0.7319	<i>0.7987</i>	0.3772
Industrial training	<i>0.4573</i>	0.2229	0.3425	0.2370	0.3333	0.7169	0.5703	0.3860
Full-time vocational school	-0.0711	0.4482	0.4339	0.3623	-0.5076	1.2884	0.3579	0.7246
Technical school	1.0278	0.3146	1.1603	0.3169	0.2133	1.2935	<i>1.4259</i>	0.5797
Polytechnic	1.5600	0.3580	1.8466	0.3448	<i>3.4128</i>	1.3831	2.4725	0.7054
College, University	1.0214	0.3059	1.4542	0.3259	–	–	1.3604	0.7586
Occupational group								
Plant cultivation, breeding, fishery	0.0688	0.4333	0.0713	0.4402	–	–	-0.4686	1.0611
Mining, mineral extraction	–	–	–	–	–	–	–	–
Manufacturing	Ref.		Ref.		Ref.		Ref.	
Technical professions	0.1601	0.3686	-0.0266	0.3934	–	–	-0.0637	0.8109
Service professions	0.2795	0.1511	0.1633	0.1631	0.1029	0.4475	-0.0840	0.2390
Other professions	0.6185	0.4727	<i>1.1656</i>	0.5348	-0.9081	0.9460	-0.4072	0.5664
Professional rank								
Worker, not skilled worker	Ref.		Ref.		Ref.		Ref.	
Worker, skilled worker	0.3060	0.3135	-0.5078	0.3279	0.5353	0.8670	0.0818	0.5019
White-collar worker, simple occupations	<i>0.4173</i>	0.2043	0.1267	0.1871	0.8302	0.6371	0.4694	0.3131
White-collar worker, advanced occupations	0.3429	0.2603	0.2572	0.2482	–	–	-0.1237	0.5420
Other	0.0718	0.1750	-0.0588	0.1627	-0.4042	0.5535	-0.4823	0.2586
Qualification (with work experience)	-0.0452	0.2013	-0.1255	0.1878	-0.5030	0.4526	-0.4411	0.2898
Career Variables								
Duration of last employment (months)	-0.0032	0.0010	-0.0023	0.0013	-0.0017	0.0033	<i>-0.0045</i>	0.0019
Duration of unemployment (weeks)								
Up to 13 weeks	–	–	Ref.		Ref.		Ref.	
Between 13 and 52 weeks	–	–	0.2079	0.1607	-0.0044	0.5324	-0.2695	0.2631
More than 52 weeks	–	–	0.2077	0.1612	-0.0536	0.5579	-0.4715	0.2659
Number of placement propositions	0.0487	0.0063			0.0460	0.0242	0.0642	0.0113
Last contact to job center (weeks)	0.0634	0.0225	0.0223	0.0275	0.0028	0.0869	<i>0.0900</i>	0.0428
Rehabilitation attendant	0.1098	0.2976	-0.2131	0.3471	–	–	0.0425	0.2476
Placement restrictions	0.0226	0.2502	-0.1526	0.2493	-0.1923	0.4260	–	–
Programme before unemployment								
No further education or programme	Ref.		Ref.		Ref.		Ref.	
Further education compl., cont. education	0.4974	0.1658	0.4425	0.1462	-0.2455	1.0999	0.9273	0.3132
Further education compl., voc. adjustment	0.9691	0.5325	0.3913	0.4974	–	–	–	–
Job-preparative measure	1.6544	1.1257	2.0072	1.1866	–	–	–	–
Job creation scheme	2.4785	0.1654	2.5109	0.1638	1.8661	0.6655	2.9205	0.3027
Rehabilitation measure	0.6461	0.5796	<i>1.0948</i>	0.5293	0.7531	0.4639	0.7394	0.4562
Regional Context Variables								
Cluster II	-0.7261	0.1551	-0.5160	0.1519	-0.8996	0.4734	<i>-0.6045</i>	0.2600
Cluster III	-0.7440	0.1540	-0.4901	0.1472	<i>-0.9586</i>	0.4629	-0.7750	0.2595
Cluster IV	-0.6171	0.2384	<i>-0.4636</i>	0.2170	-0.5157	0.6559	-0.4691	0.3638
Cluster V	Ref.		Ref.		Ref.		Ref.	

Bold letters indicate significance at the 1% level. *Italic* letters refer to the 5% level. – not included in the estimation/ no observation. Ref. denotes the reference category.

¹ DoR = Degree of restriction

² People with accepted degree of restriction, but no equalisation to other persons with the same DoR.

Tab. 7: ESTIMATION RESULTS OF THE LOGIT-MODELS FOR THE PROPENSITY SCORE FOR WOMEN IN WEST GERMANY

Variable	ALMP part.		Target Score=0		Target Score=1		Target Score=2	
	Coeff.	S.E.	Coeff.	S.E.	Coeff.	S.E.	Coeff.	S.E.
Constant	-0.3780	0.9678	<i>-11.2637</i>	4.6088	-9.5382	1.8273	-5.6442	0.9976
Socio-Demographic Variables								
Age	-0.0818	0.0481	0.2730	0.2370	0.2278	0.0860	<i>0.1287</i>	0.0516
Age(squared)	0.0009	0.0006	-0.0030	0.0031	-0.0029	0.0011	-0.0021	0.0007
Married	-0.1814	0.1326	-0.9377	0.2660	-0.4296	0.1608	-0.4958	0.1401
Number of children	0.0274	0.0714	0.1895	0.1385	-0.0723	0.0854	-0.0976	0.0835
German	0.3292	0.2466	0.6444	0.7461	0.4824	0.3083	0.3463	0.2104
Health restrictions								
No health restrictions	Ref.		Ref.		Ref.		Ref.	
Acc. DoR, ¹ 80% and over	<i>1.1858</i>	0.4773	<i>2.6820</i>	1.2685	0.6539	1.0585	1.6272	0.4838
Acc. DoR, 50% to under 80%	0.9146	0.3247	–	–	1.2478	0.4612	1.1134	0.3590
Acc. DoR, 30% to under 50%	<i>2.8507</i>	1.2929	–	–	4.0920	0.9626	2.1872	0.7901
Acc. DoR, 30% to under 50%, no equalis. ²	<i>0.8966</i>	0.3932	–	–	-0.0081	0.7536	-0.1669	0.6085
Other health restrictions	-0.0358	0.2497	-0.4295	0.7374	0.1051	0.3006	-0.2467	0.2575
Qualification Variables								
Professional training								
Without compl. prof. training, no CSE	Ref.		Ref.		Ref.		Ref.	
Without compl. prof. training, with CSE	-0.0392	0.2367	–	–	0.3488	0.4219	0.1097	0.2408
Industrial training	-0.0557	0.2409	-2.3817	0.4053	0.2694	0.4666	0.3212	0.2853
Full-time vocational school	-0.5468	0.4582	-1.6778	0.6302	-0.1841	0.6656	<i>0.9711</i>	0.4073
Technical school	0.2193	0.3608	<i>-1.0572</i>	0.4800	<i>1.1596</i>	0.5136	<i>0.8941</i>	0.3954
Polytechnic	1.0270	0.3876	–	–	2.3153	0.5337	<i>1.1810</i>	0.4639
College, University	0.8918	0.3182	-0.6161	0.4352	1.5042	0.5118	1.3939	0.4067
Occupational group								
Plant cultivation, breeding, fishery	-0.4377	0.4955	<i>2.4877</i>	1.1846	0.3924	0.5811	-0.0812	0.5039
Mining, mineral extraction	–	–	–	–	–	–	–	–
Manufacturing	Ref.		Ref.		Ref.		Ref.	
Technical professions	-0.9949	0.4736	0.8804	1.2520	-0.5334	0.5576	0.0022	0.5012
Service professions	0.0388	0.1718	1.9242	1.0203	0.4853	0.2570	0.2795	0.1792
Other professions	-0.1020	0.6413	–	–	–	–	-0.3206	0.6467
Professional rank								
Worker, not skilled worker	Ref.		Ref.		Ref.		Ref.	
Worker, skilled worker	-0.3995	0.4043	-0.0885	0.7307	-0.2056	0.4389	0.1312	0.3138
White-collar worker, simple occupations	0.2750	0.2344	0.2360	0.5821	0.2358	0.2997	0.2074	0.2186
White-collar worker, advanced occupations	<i>0.6297</i>	0.2963	0.6928	0.6286	1.0444	0.3384	0.3507	0.3100
Other	-0.5500	0.1961	0.4875	0.5532	0.2077	0.2675	0.0516	0.1830
Qualification (with work experience)	-0.0092	0.1842	–	–	0.0558	0.3767	<i>0.5020</i>	0.2486
Career Variables								
Duration of last employment (months)	-0.0029	0.0013	-0.0007	0.0023	-0.0028	0.0015	-0.0047	0.0014
Duration of unemployment (weeks)								
Up to 13 weeks	Ref.		Ref.		Ref.		Ref.	
Between 13 and 52 weeks	-0.0211	0.1631	0.5010	0.2781	0.1418	0.1783	-0.0596	0.1598
More than 52 weeks	-0.0982	0.1687	–	–	0.2619	0.3049	-0.4016	0.2158
Number of placement propositions	0.0350	0.0076	0.4197	0.0704	0.0526	0.0140	0.0341	0.0092
Last contact to job center (weeks)	0.1067	0.0270	0.0038	0.0947	0.0701	0.0411	0.0524	0.0324
Rehabilitation attendant	-0.2651	0.3145	–	–	–	–	0.3125	0.5072
Placement restrictions	-0.1167	0.2672	–	–	-0.1387	0.4875	-1.1418	0.3454
Programme before unemployment								
No further education or programme	–	–	Ref.		Ref.		Ref.	
Further education compl., cont. education	–	–	–	–	<i>0.8017</i>	0.3257	-0.4191	0.2585
Further education compl., voc. adjustment	–	–	–	–	1.1010	1.1527	–	–
Job-preparative measure	–	–	–	–	–	–	–	–
Job creation scheme	–	–	–	–	3.9529	0.4613	3.1186	0.2843
Rehabilitation measure	–	–	–	–	–	–	0.8893	0.8683
Regional Context Variables								
Cluster II	-0.7062	0.1766	-0.7375	0.3363	-0.2661	0.2119	-0.5907	0.1786
Cluster III	<i>-0.3780</i>	0.1634	-0.4186	0.3001	-0.2772	0.2040	<i>-0.3827</i>	0.1684
Cluster IV	<i>-0.6868</i>	0.2947	-0.6720	0.5025	0.1992	0.2822	<i>-0.5609</i>	0.2661
Cluster V	Ref.		Ref.		Ref.		Ref.	

Bold letters indicate significance at the 1% level. *Italic* letters refer to the 5% level. – not included in the estimation/ no observation. Ref. denotes the reference category.

¹ DoR = Degree of restriction

² People with accepted degree of restriction, but no equalisation to other persons with the same DoR.

Tab. 8: ESTIMATION RESULTS OF THE LOGIT-MODELS FOR THE PROPENSITY SCORE FOR WOMEN IN WEST GERMANY

Variable	Target Score=3		Target Score=4		Target Score=5	
	Coeff.	S.E.	Coeff.	S.E.	Coeff.	S.E.
Constant	-2.0677	0.9618	-6.4537	1.6772	-0.8188	3.5259
Socio-Demographic Variables						
Age	0.0172	0.0565	0.2522	0.0981	-0.0305	0.1805
Age(squared)	-0.0008	0.0007	-0.0038	0.0012	-0.0006	0.0022
Married	-0.2870	0.1578	-0.4952	0.2618	0.3636	0.4809
Number of children	0.0930	0.0924	-0.0962	0.1970	0.1728	0.3581
German	0.1469	0.2147	0.1404	0.3961	-0.3164	0.9595
Health restrictions						
No health restrictions	Ref.		Ref.		Ref.	
Acc. DoR, ¹ 80% and over	1.7470	0.4737	-0.3389	0.9326	1.4437	1.3247
Acc. DoR, 50% to under 80%	0.1768	0.4050	-1.7496	0.9089	3.0112	1.0297
Acc. DoR, 30% to under 50%	1.4298	1.1010	-0.7444	1.3497	5.4024	1.8548
Acc. DoR, 30% to under 50%, no equalis. ²	-0.0439	0.4834	-1.9871	1.0439	2.7876	1.2381
Other health restrictions	0.0056	0.2679	-2.0575	0.8473	1.2525	0.9469
Qualification Variables						
Professional training						
Without compl. prof. training, no CSE	Ref.		Ref.		Ref.	
Without compl. prof. training, with CSE	0.0771	0.2088	<i>0.8758</i>	0.3992	0.6153	0.6374
Industrial training	0.3784	0.2713	2.2079	0.5137	-0.1222	0.9341
Full-time vocational school	-0.6942	0.6825	1.7334	1.2030	–	–
Technical school	0.5980	0.5533	3.7362	0.8643	–	–
Polytechnic	1.6924	0.5314	4.3327	1.1994	–	–
College, University	1.4155	0.4378	2.8327	0.8348	–	–
Occupational group						
Plant cultivation, breeding, fishery	0.7099	0.4127	–	–	–	–
Mining, mineral extraction	–	–	–	–	–	–
Manufacturing	Ref.		Ref.		Ref.	
Technical professions	0.3265	0.5378	1.1161	0.7589	–	–
Service professions	0.1881	0.1786	0.0018	0.2895	0.3875	0.5441
Other professions	0.1099	0.4068	<i>1.5070</i>	0.5877	1.2327	1.1498
Professional rank						
Worker, not skilled worker	Ref.		Ref.		Ref.	
Worker, skilled worker	-0.4886	0.4575	0.6791	0.7294	0.3146	1.9828
White-collar worker, simple occupations	0.1196	0.2591	0.0414	0.4036	0.6139	0.7434
White-collar worker, advanced occupations	0.3046	0.3683	-1.4322	0.7623	0.7520	1.1769
Other	0.1861	0.1967	-0.1531	0.3179	0.5623	0.6279
Qualification (with work experience)	-0.0003	0.2187	1.9150	0.4281	-0.4089	0.5603
Career Variables						
Duration of last employment (months)	-0.0033	0.0014	-0.0019	0.0021	0.0016	0.0047
Duration of unemployment (weeks)						
Up to 13 weeks	Ref.		Ref.		Ref.	
Between 13 and 52 weeks	<i>-0.4308</i>	0.1935	0.1185	0.4791	0.3590	1.3316
More than 52 weeks	-0.7119	0.2464	-1.5047	0.5008	-0.5469	1.2949
Number of placement propositions	<i>0.0252</i>	0.0108	0.0003	0.0188	0.0947	0.0297
Last contact to job center (weeks)	<i>0.0666</i>	0.0333	-0.0141	0.0533	0.1204	0.0762
Rehabilitation attendant	-0.0367	0.3706	-1.7651	0.5478	-0.7359	0.6378
Placement restrictions	-0.5638	0.3129	0.5361	0.8848	-2.1334	0.8297
Programme before unemployment						
No further education or programme	Ref.		Ref.		Ref.	
Further education compl., cont. education	0.1747	0.2327	<i>-0.9468</i>	0.4170	0.0224	0.7509
Further education compl., voc. adjustment	1.0132	0.6516	-1.5667	1.1074	–	–
Job-preparative measure	<i>1.6697</i>	0.7627	1.7796	1.0223	–	–
Job creation scheme	2.7217	0.2540	1.3740	0.3775	3.2965	0.7295
Rehabilitation measure	0.6358	0.5649	–	–	1.3382	0.8574
Regional Context Variables						
Cluster II	-0.8182	0.1862	0.1536	0.3822	-1.7147	0.6205
Cluster III	-0.7933	0.1810	0.1304	0.3822	-1.7696	0.6427
Cluster IV	-0.5212	0.2746	-0.4673	0.5963	<i>-2.3422</i>	1.1663
Cluster V	Ref.		Ref.		Ref.	

Bold letters indicate significance at the 1% level. *Italic* letters refer to the 5% level. – not included in the estimation/ no observation. Ref. denotes the reference category.

¹ DoR = Degree of restriction

² People with accepted degree of restriction, but no equalisation to other persons with the same DoR.

Tab. 9: ESTIMATION RESULTS OF THE LOGIT-MODELS FOR THE PROPENSITY SCORE FOR MEN IN EAST GERMANY

Variable	Age < 25		Age > 50		Without professional training		Without work experience	
	Coeff.	S.E.	Coeff.	S.E.	Coeff.	S.E.	Coeff.	S.E.
Constant	13.5732	7.9058	-238.8922	16.9061	-2.1066	0.5394	-2.6827	1.0429
Socio-Demographic Variables								
Age	-1.3078	0.7583	8.7264	0.6133	<i>-0.0554</i>	0.0228	0.0149	0.0417
Age(squared)	0.0269	0.0182	-0.0805	0.0056	0.0008	0.0003	-0.0003	0.0006
Married	-0.7581	0.5709	0.3589	0.0840	0.3101	0.0988	0.5086	0.1951
Number of children	0.4678	0.2619	-0.0139	0.0658	-0.0173	0.0481	-0.0482	0.1030
German	0.7945	1.0549	-0.0440	0.3721	0.9481	0.3140	1.3789	0.7295
Health restrictions								
No health restrictions	Ref.		Ref.		Ref.		Ref.	
Acc. DoR, ¹ 80% and over	2.0207	0.5844	-0.5481	0.7512	0.2325	0.5445	1.0344	0.5790
Acc. DoR, 50% to under 80%	1.0831	0.6371	-0.1421	0.2377	0.7160	0.2380	0.4732	0.3689
Acc. DoR, 30% to under 50%	–	–	0.3587	0.2846	0.1333	0.4933	–	–
Acc. DoR, 30% to under 50%, no equalis. ²	1.4045	0.8426	-0.1966	0.2607	0.1666	0.3529	0.1653	0.4587
Other health restrictions	-0.0501	0.3147	-0.3627	0.1162	-0.1197	0.1320	-0.0002	0.2303
Qualification Variables								
Professional training								
Without compl. prof. training, no CSE	Ref.		Ref.		–	–	Ref.	
Without compl. prof. training, with CSE	<i>-0.4693</i>	0.1943	0.2663	0.1672	–	–	-0.4111	0.2109
Industrial training	-1.1019	0.2146	-0.1078	0.1544	–	–	-0.6138	0.1965
Full-time vocational school	–	–	-0.0837	0.3697	–	–	–	–
Technical school	–	–	0.1356	0.1975	–	–	-1.0304	0.6838
Polytechnic	–	–	-0.1202	0.2834	–	–	0.0510	0.6065
College, University	–	–	-0.0309	0.2153	–	–	–	–
Occupational group								
Plant cultivation, breeding, fishery	0.5612	0.2898	-0.1539	0.1487	0.1625	0.1275	0.0487	0.3003
Mining, mineral extraction	–	–	-1.9224	1.0228	-0.0618	0.7523	–	–
Manufacturing	Ref.		Ref.		Ref.		Ref.	
Technical professions	-0.2571	1.0377	-0.3047	0.1356	-0.0833	0.2543	-0.0494	0.4547
Service professions	<i>-0.4135</i>	0.2085	-0.3372	0.0809	<i>-0.2137</i>	0.0874	<i>-0.3113</i>	0.1555
Other professions	-1.2800	0.4093	-1.1671	0.3980	-1.0285	0.3021	<i>-0.9041</i>	0.4002
Professional rank								
Worker, not skilled worker	Ref.		Ref.		Ref.		Ref.	
Worker, skilled worker	-1.0221	0.2752	0.0183	0.0963	-0.1313	0.1219	-0.4685	0.2313
White-collar worker, simple occupations	-0.3466	1.0371	0.2383	0.1484	0.1547	0.2836	<i>0.9869</i>	0.4335
White-collar worker, advanced occupations	–	–	0.0183	0.2063	-0.3857	0.4608	0.1593	1.1088
Other	-0.3301	0.1716	-0.1418	0.0967	-0.1544	0.0888	-0.1220	0.1648
Qualification (with work experience)	-0.2366	0.1444	0.3674	0.2089	-0.1547	0.1154	–	–
Career Variables								
Duration of last employment (months)	0.0015	0.0051	-0.0040	0.0004	-0.0037	0.0008	0.0003	0.0012
Duration of unemployment (weeks)								
Up to 13 weeks	Ref.		Ref.		Ref.		Ref.	
Between 13 and 52 weeks	<i>0.3105</i>	0.1576	0.3536	0.0990	0.1483	0.1008	<i>0.0992</i>	0.1585
More than 52 weeks	1.6580	0.2336	0.0397	0.1021	<i>0.2620</i>	0.1099	<i>0.4405</i>	0.1957
Number of placement propositions	0.0721	0.0165	0.0862	0.0066	0.0719	0.0061	0.0511	0.0122
Last contact to job center (weeks)	-0.1381	0.0479	-0.1497	0.0193	-0.1904	0.0242	-0.1620	0.0388
Rehabilitation attendant	<i>0.7648</i>	0.3325	0.0510	0.1885	0.2319	0.1790	0.6629	0.2306
Placement restrictions	-0.3430	0.3308	-0.4122	0.1493	<i>-0.3244</i>	0.1644	-0.2742	0.2317
Programme before unemployment								
No further education or programme	Ref.		Ref.		Ref.		Ref.	
Further education compl., cont. education	0.3034	0.3269	0.7066	0.1195	0.1444	0.1281	0.3408	0.1986
Further education compl., voc. adjustment	0.9493	0.5581	0.6153	0.1483	0.5512	0.1773	1.0850	0.3200
Job-preparative measure	0.3428	0.5354	–	–	0.3456	0.6045	0.7811	0.6154
Job creation scheme	2.0412	0.2293	1.5890	0.0885	1.3481	0.0997	1.7503	0.1937
Rehabilitation measure	-0.3730	0.7565	0.2735	1.0474	-1.2114	1.0192	0.1776	0.3833
Regional Context Variables								
Cluster Ia	-1.4758	0.2578	0.1526	0.2292	-0.7788	0.1977	-1.6941	0.2777
Cluster Ib	-1.7657	0.2366	-0.0174	0.2210	-0.9016	0.1856	-1.6751	0.2605
Cluster Ic	-1.3678	0.2889	-0.1565	0.2432	-0.7590	0.2097	-1.4147	0.3041
Cluster II	Ref.		Ref.		Ref.		Ref.	

Bold letters indicate significance at the 1% level. *Italic* letters refer to the 5% level. – not included in the estimation/ no observation. Ref. denotes the reference category.

¹ DoR = Degree of restriction

² People with accepted degree of restriction, but no equalisation to other persons with the same DoR.

Tab. 10: ESTIMATION RESULTS OF THE LOGIT-MODELS FOR THE PROPENSITY SCORE FOR MEN IN EAST GERMANY

Variable	Long-term unemployed		More than 5 plac. prop.		Vocational rehabilitation		Placement restr.	
	Coeff.	S.E.	Coeff.	S.E.	Coeff.	S.E.	Coeff.	S.E.
Constant	-5.9168	0.7221	-4.9170	0.6898	-1.4614	1.1090	-4.3694	1.3654
Socio-Demographic Variables								
Age	0.1591	0.0293	0.0800	0.0271	-0.0120	0.0520	0.0617	0.0401
Age(squared)	-0.0020	0.0003	-0.0005	0.0003	0.0001	0.0007	-0.0008	0.0005
Married	0.3925	0.0807	0.2883	0.0778	0.2902	0.1863	0.3837	0.1341
Number of children	-0.0526	0.0417	-0.0224	0.0399	0.0532	0.0923	-0.0683	0.0727
German	0.4366	0.2926	-0.1056	0.2911	–	–	0.8685	1.0224
Health restrictions								
No health restrictions	Ref.		Ref.		Ref.		Ref.	
Acc. DoR ¹ , 80% and over	-0.1608	0.5295	0.3180	0.6840	–	–	–	–
Acc. DoR, 50% to under 80%	-0.1127	0.2237	0.7183	0.2319	-0.0707	0.4813	-0.0690	0.3126
Acc. DoR, 30% to under 50%	-0.4211	0.4022	0.8056	0.3024	-0.2961	0.5867	-0.0067	0.3811
Acc. DoR, 30% to under 50%, no equalis. ²	-0.5038	0.2755	0.0957	0.3228	-0.8062	0.5362	-0.7772	0.3661
Other health restrictions	-0.4426	0.1145	-0.3411	0.1163	-0.6332	0.4507	-0.6473	0.2944
Qualification Variables								
Professional training								
Without compl. prof. training, no CSE	Ref.		Ref.		Ref.		Ref.	
Without compl. prof. training, with CSE	0.1208	0.1268	-0.0052	0.1391	-0.2495	0.3086	0.0710	0.2214
Industrial training	-0.0439	0.1133	-0.1906	0.1243	-0.0820	0.2646	-0.0142	0.1984
Full-time vocational school	0.0365	0.3729	-0.2389	0.3338	0.7135	0.7082	0.1636	0.5937
Technical school	0.2924	0.2018	-0.0869	0.2028	–	–	-0.7370	0.5265
Polytechnic	0.1120	0.3498	-0.2883	0.3236	–	–	-1.0257	1.0923
College, University	0.1630	0.2297	-0.4449	0.2321	–	–	-0.3160	0.5791
Occupational group								
Plant cultivation, breeding, fishery	0.1972	0.1263	0.1527	0.1455	<i>0.6934</i>	0.3243	<i>0.4980</i>	0.2249
Mining, mineral extraction	-1.0655	0.7196	–	–	–	–	0.3790	1.0674
Manufacturing	Ref.		Ref.		Ref.		Ref.	
Technical professions	-0.3399	0.1708	0.1450	0.1568	0.6047	0.4503	0.3676	0.3206
Service professions	-0.2181	0.0747	-0.0764	0.0764	0.0848	0.1781	0.0167	0.1246
Other professions	-1.1442	0.3446	-1.6202	0.4620	-1.4704	0.4833	-1.1446	0.2997
Professional rank								
Worker, not skilled worker	Ref.		Ref.		Ref.		Ref.	
Worker, skilled worker	0.1281	0.0966	-0.1348	0.0935	-0.4500	0.2732	-0.3090	0.1832
White-collar worker, simple occupations	-0.0490	0.1830	0.4488	0.1745	0.8930	0.5462	0.9444	0.2966
White-collar worker, advanced occupations	<i>-0.6612</i>	0.2746	0.1608	0.2631	0.6932	1.1194	-0.3722	0.7656
Other	<i>-0.1765</i>	0.0844	-0.1627	0.0837	-0.1348	0.1977	<i>-0.3282</i>	0.1403
Qualification (with work experience)	-0.1601	0.1188	-0.0097	0.1251	<i>-0.3903</i>	0.1775	-0.2143	0.1531
Career Variables								
Duration of last employment (months)	-0.0036	0.0004	-0.0031	0.0009	-0.0019	0.0014	-0.0040	0.0010
Duration of unemployment (weeks)								
Up to 13 weeks	–	–	Ref.		Ref.			
Between 13 and 52 weeks	–	–	0.0494	0.0874	0.0180	0.2119	-0.0066	0.1530
More than 52 weeks	–	–	-0.0787	0.0927	-0.4262	0.2262	<i>-0.3274</i>	0.1593
Number of placement propositions	0.0443	0.0051	–	–	0.0605	0.0134	0.0494	0.0092
Last contact to job center (weeks)	-0.0922	0.0158	-0.1120	0.0185	-0.1544	0.0450	-0.1693	0.0339
Rehabilitation attendant	0.0091	0.1478	0.0624	0.1791	–	–	0.3212	0.1154
Placement restrictions	-0.2586	0.1398	-0.2112	0.1496	0.0884	0.1869	–	–
Programme before unemployment								
No further education or programme	Ref.		Ref.		Ref.		Ref.	
Further education compl., cont. education	0.1706	0.1017	0.4341	0.0909	0.3133	0.3342	0.7741	0.1874
Further education compl., voc. adjustment	0.0241	0.1429	0.5085	0.1252	-0.2150	0.5447	<i>0.5275</i>	0.2675
Job-preparative measure	–	–	1.2273	0.7541	<i>1.7065</i>	0.8205	1.6120	1.1051
Job creation scheme	0.7989	0.0919	1.3695	0.0847	1.6557	0.2041	1.4924	0.1509
Rehabilitation measure	-0.0621	0.4301	<i>0.9425</i>	0.3869	0.0411	0.2647	0.4731	0.2598
Regional Context Variables								
Cluster Ia	0.2545	0.2270	<i>0.6670</i>	0.2733	-0.3128	0.4634	0.0172	0.3905
Cluster Ib	0.0321	0.2211	0.3889	0.2662	-0.1557	0.4389	0.2081	0.3741
Cluster Ic	0.3036	0.2364	0.4589	0.2774	-0.2369	0.4866	0.3785	0.3946
Cluster II	Ref.		Ref.		Ref.		Ref.	

Bold letters indicate significance at the 1% level. *Italic* letters refer to the 5% level. – not included in the estimation/ no observation. Ref. denotes the reference category.

¹ DoR = Degree of restriction

² People with accepted degree of restriction, but no equalisation to other persons with the same DoR.

Tab. 11: ESTIMATION RESULTS OF THE LOGIT-MODELS FOR THE PROPENSITY SCORE FOR MEN IN EAST GERMANY

Variable	ALMP part.		Target Score=0		Target Score=1		Target Score=2	
	Coeff.	S.E.	Coeff.	S.E.	Coeff.	S.E.	Coeff.	S.E.
Constant	-5.0989	0.6654	<i>-7.7446</i>	3.2242	-10.8623	1.1611	-9.9124	0.7484
Socio-Demographic Variables								
Age	0.1227	0.0244	0.0226	0.1536	0.2931	0.0459	0.2748	0.0298
Age(squared)	-0.0011	0.0003	0.0005	0.0020	-0.0031	0.0006	-0.0032	0.0004
Married	0.2217	0.0741	0.1126	0.2091	0.1898	0.1092	0.3323	0.0917
Number of children	-0.0429	0.0393	0.0771	0.0977	-0.0021	0.0547	-0.0405	0.0478
German	0.4753	0.3544	–	–	0.5132	0.3358	<i>0.9348</i>	0.3905
Health restrictions								
No health restrictions	Ref.		Ref.		Ref.		Ref.	
Acc. DoR ¹ 80% and over	0.7351	0.4746	<i>3.0140</i>	1.2926	-0.1103	1.0487	-0.3938	0.7343
Acc. DoR, 50% to under 80%	0.8839	0.1847	<i>1.2876</i>	0.6372	0.6629	0.3538	0.1097	0.2670
Acc. DoR, 30% to under 50%	0.9190	0.2500	3.3576	0.9152	0.4727	0.6344	0.4030	0.3962
Acc. DoR, 30% to under 50%, no equalis. ²	0.2166	0.2662	1.9122	0.6655	-0.5096	0.6004	-0.0596	0.3188
Other health restrictions	-0.0369	0.1019	-0.1425	0.3597	<i>-0.3453</i>	0.1726	-0.3539	0.1307
Qualification Variables								
Professional training								
Without compl. prof. training, no CSE	Ref.		Ref.		Ref.		Ref.	
Without compl. prof. training, with CSE	-0.0412	0.1224	–	–	-0.1720	0.3116	0.1684	0.1650
Industrial training	-0.0906	0.1070	-0.9326	0.8010	-0.0392	0.2970	0.5971	0.1667
Full-time vocational school	-0.4836	0.3778	–	–	-0.2246	0.6629	0.6243	0.4585
Technical school	0.2067	0.1728	0.1624	0.8212	0.6499	0.3649	0.8531	0.2334
Polytechnic	0.2536	0.2717	–	–	-0.1038	0.5720	0.7773	0.3485
College, University	0.1727	0.1827	0.0778	0.8267	0.2896	0.3900	0.8098	0.2471
Occupational group								
Plant cultivation, breeding, fishery	0.1965	0.1170	-1.4060	0.7412	-0.2877	0.2038	<i>0.2781</i>	0.1410
Mining, mineral extraction	-0.6182	0.7379	–	–	0.2509	0.7387	-1.4235	1.0175
Manufacturing	Ref.		Ref.		Ref.		Ref.	
Technical professions	<i>-0.3458</i>	0.1397	-0.1144	0.4372	-0.3830	0.2333	-0.2837	0.1710
Service professions	-0.0887	0.0717	0.0330	0.2023	-0.3312	0.1094	-0.1326	0.0845
Other professions	-1.4777	0.4609	–	–	<i>-2.2040</i>	1.0094	-1.4322	0.5112
Professional rank								
Worker, not skilled worker	Ref.		Ref.		Ref.		Ref.	
Worker, skilled worker	-0.1216	0.0908	<i>-0.6658</i>	0.2648	-0.1169	0.1256	0.0345	0.1037
White-collar worker, simple occupations	0.4489	0.1568	-0.2116	0.4530	0.0834	0.2420	0.1819	0.1802
White-collar worker, advanced occupations	0.2560	0.2268	-0.8872	1.0821	-0.3469	0.4238	-0.2334	0.2611
Other	-0.4202	0.0719	0.3472	0.2302	0.0380	0.1169	0.0027	0.0945
Qualification (with work experience)	0.0032	0.1064	–	–	0.1907	0.3619	0.8908	0.1861
Career Variables								
Duration of last employment (months)	-0.0050	0.0009	-0.0011	0.0016	-0.0055	0.0009	-0.0036	0.0005
Duration of unemployment (weeks)								
Up to 13 weeks	Ref.		Ref.		Ref.		Ref.	
Between 13 and 52 weeks	-0.2765	0.0799	1.6114	0.2328	0.6552	0.1102	-0.0994	0.0975
More than 52 weeks	-0.6797	0.0871	–	–	1.2364	0.1712	-0.4695	0.1233
Number of placement propositions	0.0463	0.0046	0.3232	0.0522	0.0496	0.0091	0.0209	0.0071
Last contact to job center (weeks)	-0.1133	0.0163	-0.0743	0.0567	-0.1167	0.0277	-0.1108	0.0196
Rehabilitation attendant	0.1646	0.1437	–	–	0.8126	0.4715	<i>-0.5639</i>	0.2709
Placement restrictions	<i>-0.3297</i>	0.1294	–	–	-0.0946	0.3216	-0.7430	0.1937
Programme before unemployment								
No further education or programme	–	–	Ref.		Ref.		Ref.	
Further education compl., cont. education	–	–	–	–	0.2679	0.2048	-0.1562	0.1332
Further education compl., voc. adjustment	–	–	–	–	<i>0.5768</i>	0.2944	-0.1245	0.1832
Job-preparative measure	–	–	–	–	–	–	–	–
Job creation scheme	–	–	–	–	2.2036	0.1922	1.2987	0.1220
Rehabilitation measure	–	–	–	–	<i>2.3296</i>	1.1037	–	–
Regional Context Variables								
Cluster Ia	0.2448	0.2372	1.3894	1.0294	0.2169	0.3002	-0.0223	0.2308
Cluster Ib	-0.0903	0.2316	1.2162	1.0198	-0.0967	0.2936	-0.1868	0.2233
Cluster Ic	0.0775	0.2429	0.5121	1.0770	-0.2939	0.3271	-0.2013	0.2453
Cluster II	Ref.		Ref.		Ref.		Ref.	

Bold letters indicate significance at the 1% level. *Italic* letters refer to the 5% level. – not included in the estimation/ no observation. Ref. denotes the reference category.

¹ DoR = Degree of restriction

² People with accepted degree of restriction, but no equalisation to other persons with the same DoR.

Tab. 12: ESTIMATION RESULTS OF THE LOGIT-MODELS FOR THE PROPENSITY SCORE FOR MEN IN EAST GERMANY

Variable	Target Score=3		Target Score=4		Target Score=5	
	Coeff.	S.E.	Coeff.	S.E.	Coeff.	S.E.
Constant	-5.7408	0.6956	-4.8684	1.4002	0.9850	2.4444
Socio-Demographic Variables						
Age	0.2167	0.0310	0.2325	0.0512	0.0453	0.0953
Age(squared)	-0.0025	0.0004	-0.0030	0.0006	-0.0009	0.0012
Married	<i>0.2317</i>	0.0992	0.5990	0.1589	<i>0.7314</i>	0.2955
Number of children	0.0518	0.0506	<i>-0.2144</i>	0.0956	-0.0934	0.1705
German	0.0073	0.3647	0.9497	1.0661	-2.9748	1.5415
Health restrictions						
No health restrictions	Ref.		Ref.		Ref.	
Acc. DoR, ¹ 80% and over	0.5874	0.4630	0.7115	0.6061	-0.0150	0.9522
Acc. DoR, 50% to under 80%	0.6210	0.2295	0.3372	0.3259	-0.1112	0.6539
Acc. DoR, 30% to under 50%	0.6467	0.3389	0.0896	0.4346	-0.5540	0.9318
Acc. DoR, 30% to under 50%, no equalis. ²	-0.2788	0.3406	0.0343	0.3994	-0.5374	0.7698
Other health restrictions	<i>-0.2746</i>	0.1326	-0.1540	0.2246	-0.6321	0.5269
Qualification Variables						
Professional training						
Without compl. prof. training, no CSE	Ref.		Ref.		Ref.	
Without compl. prof. training, with CSE	-0.0123	0.1350	-0.1723	0.1800	-0.3596	0.3057
Industrial training	0.5892	0.1473	0.2597	0.2175	0.2669	0.3701
Full-time vocational school	0.3653	0.4439	0.6573	0.8598	0.0300	1.2223
Technical school	0.8203	0.2395	-0.0111	0.4376	–	–
Polytechnic	0.6428	0.3884	0.3720	0.7452	–	–
College, University	0.7710	0.2656	-0.5230	0.6143	–	–
Occupational group						
Plant cultivation, breeding, fishery	0.0805	0.1584	0.3512	0.2337	-0.4037	0.6117
Mining, mineral extraction	–	–	0.5523	1.1274	–	–
Manufacturing	Ref.		Ref.		Ref.	
Technical professions	-0.0706	0.1864	0.1261	0.3241	0.3841	0.8423
Service professions	-0.1788	0.0923	-0.1476	0.1437	0.2998	0.2796
Other professions	-0.8137	0.3046	<i>-1.1322</i>	0.4757	-1.8930	1.0448
Professional rank						
Worker, not skilled worker	Ref.		Ref.		Ref.	
Worker, skilled worker	-0.0726	0.1199	-0.0011	0.2035	-0.0044	0.3957
White-collar worker, simple occupations	0.1425	0.2188	0.8663	0.3565	0.9885	0.7354
White-collar worker, advanced occupations	-0.1973	0.3152	-0.0360	0.5586	1.8340	1.2481
Other	<i>-0.2122</i>	0.1013	-0.3035	0.1556	0.0027	0.2933
Qualification (with work experience)	0.5822	0.1426	0.8357	0.2087	0.2454	0.3230
Career Variables						
Duration of last employment (months)	-0.0042	0.0008	-0.0019	0.0011	-0.0049	0.0035
Duration of unemployment (weeks)						
Up to 13 weeks	Ref.		Ref.		Ref.	
Between 13 and 52 weeks	<i>-0.2989</i>	0.1166	-0.2562	0.2153	-0.2725	0.5222
More than 52 weeks	-1.1749	0.1346	-1.4876	0.2342	-0.8675	0.5236
Number of placement propositions	0.0155	0.0080	0.0166	0.0127	<i>0.0468</i>	0.0212
Last contact to job center (weeks)	-0.1105	0.0207	-0.1611	0.0361	-0.2678	0.0762
Rehabilitation attendant	-0.2666	0.1792	-0.6217	0.2237	-0.2308	0.3561
Placement restrictions	-1.2543	0.1713	-0.8460	0.2498	-0.3965	0.5029
Programme before unemployment						
No further education or programme	Ref.		Ref.		Ref.	
Further education compl., cont. education	-0.5229	0.1428	<i>-0.4673</i>	0.2356	-0.0503	0.4116
Further education compl., voc. adjustment	-0.5068	0.1750	-0.1613	0.2666	-0.2973	0.5278
Job-preparative measure	0.3547	0.5584	-1.2863	1.0505	-0.0529	1.1475
Job creation scheme	0.4971	0.1318	0.3609	0.2141	0.9353	0.3627
Rehabilitation measure	-0.7411	0.4791	-0.0987	0.3616	-0.6435	0.5650
Regional Context Variables						
Cluster Ia	-0.1688	0.2543	-1.2811	0.3329	1.0778	1.1091
Cluster Ib	-0.4185	0.2447	-1.1692	0.3033	0.7015	1.0855
Cluster Ic	-0.0703	0.2619	-0.9552	0.3333	0.2774	1.1287
Cluster II	Ref.		Ref.		Ref.	

Bold letters indicate significance at the 1% level. *Italic* letters refer to the 5% level. – not included in the estimation/ no observation. Ref. denotes the Ref. category.

¹ DoR = Degree of restriction

² People with accepted degree of restriction, but no equalisation to other persons with the same DoR.

Tab. 13: ESTIMATION RESULTS OF THE LOGIT-MODELS FOR THE PROPENSITY SCORE FOR WOMEN IN EAST GERMANY

Variable	Age < 25		Age > 50		Without professional training		Without work Experience	
	Coeff.	S.E.	Coeff.	S.E.	Coeff.	S.E.	Coeff.	S.E.
Constant	17.7318	9.5714	-193.6120	15.2633	-4.6508	0.6740	-5.4542	0.9700
Socio-Demographic Variables								
Age	<i>-1.8032</i>	0.9166	7.0812	0.5562	0.0797	0.0244	0.1079	0.0376
Age(squared)	0.0422	0.0218	-0.0659	0.0051	-0.0009	0.0003	<i>-0.0012</i>	0.0005
Married	-0.4856	0.3740	<i>0.1752</i>	0.0692	0.0945	0.0702	0.3683	0.1144
Number of children	-0.0545	0.2476	0.0457	0.0767	-0.0394	0.0368	-0.0219	0.0608
German	–	–	0.7526	0.6024	0.8813	0.4577	0.7561	0.6046
Health restrictions								
No health restrictions	Ref.		Ref.		Ref.		Ref.	
Acc. DoR, ¹ 80% and over	2.3752	0.9162	0.5872	0.5431	0.7035	0.6256	1.0744	0.6614
Acc. DoR, 50% to under 80%	0.9588	0.8022	0.4074	0.2084	-0.0186	0.3095	0.6111	0.3954
Acc. DoR, 30% to under 50%	–	–	0.8819	0.3079	1.2322	0.3669	1.0275	0.6575
Acc. DoR, 30% to under 50%, no equalis. ²	–	–	-0.1752	0.2989	-0.4625	0.4311	-0.2475	0.6249
Other health restrictions	-0.4905	0.4813	-0.1709	0.1031	-0.3287	0.1251	-0.2220	0.1994
Qualification Variables								
Professional training								
Without compl. prof. training, no CSE	Ref.		Ref.		–	–	Ref.	
Without compl. prof. training, with CSE	0.5163	0.4127	0.0627	0.1480	–	–	0.2847	0.2837
Industrial training	-0.4776	0.4265	0.1293	0.1414	–	–	-0.0254	0.2743
Full-time vocational school	0.4411	0.8352	0.7855	0.2416	–	–	-0.4208	0.5562
Technical school	1.7244	0.5621	0.5129	0.1708	–	–	<i>0.8702</i>	0.3413
Polytechnic	1.5520	1.1829	0.8068	0.2879	–	–	1.0921	0.8527
College, University	–	–	0.9729	0.2282	–	–	0.3168	0.4883
Occupational group								
Plant cultivation, breeding, fishery	0.0411	0.3944	0.2139	0.1444	0.2184	0.1225	0.2822	0.2079
Mining, mineral extraction	–	–	–	–	–	–	–	–
Manufacturing	Ref.		Ref.		Ref.		Ref.	
Technical professions	-0.1679	0.6728	0.4442	0.1411	0.3228	0.2129	-0.1591	0.3262
Service professions	-0.2629	0.2527	-0.0386	0.0788	-0.0885	0.0757	0.0212	0.1359
Other professions	-0.9534	0.5810	-0.8607	0.4697	-0.8312	0.4251	-0.5124	0.4853
Professional rank								
Worker, not skilled worker	Ref.		Ref.		Ref.		Ref.	
Worker, skilled worker	-0.3429	0.3390	0.1272	0.0940	0.2160	0.1172	0.0958	0.1917
White-collar worker, simple occupations	0.2204	0.4453	0.1466	0.1057	0.3840	0.1449	0.1484	0.2504
White-collar worker, advanced occupations	–	–	-0.0759	0.1901	0.2284	0.3235	-0.0432	0.5182
Other	-0.1266	0.2596	-0.0040	0.0831	0.0512	0.0829	0.2369	0.1486
Qualification (with work experience)	-0.0505	0.1844	-0.1479	0.1408	-0.2728	0.1058	–	–
Career Variables								
Duration of last employment (months)	-0.0091	0.0074	-0.0019	0.0003	-0.0029	0.0006	-0.0019	0.0010
Duration of unemployment (weeks)								
Up to 13 weeks	Ref.		Ref.		Ref.		Ref.	
Between 13 and 52 weeks	-0.0076	0.2087	0.0088	0.0983	0.0718	0.1077	-0.1255	0.1456
More than 52 weeks	0.9603	0.2867	-0.4272	0.0955	-0.0147	0.1065	0.0708	0.1482
Number of placement propositions	<i>0.0463</i>	0.0200	0.1470	0.0074	0.0959	0.0071	0.1023	0.0094
Last contact to job center (weeks)	-0.0470	0.0582	-0.1242	0.0166	-0.1739	0.0215	-0.0201	0.0259
Rehabilitation attendant	0.4309	0.5532	<i>0.3754</i>	0.1851	0.3001	0.2189	0.0278	0.2592
Placement restrictions	-0.5051	0.5328	<i>-0.3492</i>	0.1398	-0.5766	0.1792	-0.3118	0.2452
Programme before unemployment								
No further education or programme	Ref.		Ref.		Ref.		Ref.	
Further education compl., cont. education	0.6073	0.3367	0.6793	0.0852	0.4857	0.0898	0.4726	0.1269
Further education compl., voc. adjustment	0.0705	0.7552	0.9768	0.1289	0.4891	0.1751	<i>0.6610</i>	0.2677
Job-preparative measure	0.6113	0.6196	–	–	0.0680	1.0234	0.4889	0.7493
Job creation scheme	2.4487	0.3042	1.8564	0.0754	1.2749	0.0858	1.5513	0.1477
Rehabilitation measure	<i>1.3329</i>	0.6570	–	–	0.4775	0.6269	<i>0.9370</i>	0.4448
Regional Context Variables								
Cluster Ia	-1.8211	0.3194	0.0610	0.2301	<i>-0.4112</i>	0.2034	-1.1810	0.2736
Cluster Ib	-2.2639	0.2936	-0.0167	0.2241	-0.6813	0.1955	-1.2800	0.2635
Cluster Ic	-2.1955	0.3935	-0.0874	0.2382	-0.7156	0.2149	-1.2981	0.3017
Cluster II	Ref.		Ref.		Ref.		Ref.	

Bold letters indicate significance at the 1% level. *Italic* letters refer to the 5% level. – not included in the estimation/ no observation. Ref. denotes the reference category.

¹ DoR = Degree of restriction

² People with accepted degree of restriction, but no equalisation to other persons with the same DoR.

Tab. 14: ESTIMATION RESULTS OF THE LOGIT-MODELS FOR THE PROPENSITY SCORE FOR WOMEN IN EAST GERMANY

Variable	Long-term unemployed		More than 5 plac. prop.		Vocational rehabilitation		Placement restr.	
	Coeff.	S.E.	Coeff.	S.E.	Coeff.	S.E.	Coeff.	S.E.
Constant	-8.5335	0.6292	-5.9804	0.7889	<i>-3.4940</i>	1.5118	-5.9015	1.6294
Socio-Demographic Variables								
Age	0.2325	0.0225	0.1161	0.0254	0.0479	0.0672	0.1325	0.0505
Age(squared)	-0.0028	0.0003	-0.0011	0.0003	-0.0004	0.0008	-0.0016	0.0006
Married	0.0804	0.0478	0.0992	0.0571	0.3322	0.2017	0.5260	0.1325
Number of children	-0.0364	0.0254	0.0129	0.0305	-0.1086	0.1168	-0.1138	0.0754
German	0.5473	0.3466	0.4379	0.5385	–	–	0.2362	1.1186
Health restrictions								
No health restrictions	Ref.		Ref.		Ref.		Ref.	
Acc. DoR, ¹ 80% and over	0.5178	0.4759	1.4518	0.5573	–	–	–	–
Acc. DoR, 50% to under 80%	<i>0.4365</i>	0.1969	<i>0.5807</i>	0.2347	-1.4326	0.5567	-0.7914	0.2946
Acc. DoR, 30% to under 50%	0.4529	0.3158	<i>0.7554</i>	0.3569	-0.2376	0.6014	-0.5929	0.3551
Acc. DoR, 30% to under 50%, no equalis. ²	-0.3667	0.2868	0.2628	0.3228	<i>-1.5368</i>	0.5986	-1.4669	0.3575
Other health restrictions	-0.1379	0.0829	<i>-0.2702</i>	0.1102	-1.4582	0.4757	-1.4201	0.2704
Qualification Variables								
Professional training								
Without compl. prof. training, no CSE	Ref.		Ref.		Ref.		Ref.	
Without compl. prof. training, with CSE	<i>0.2601</i>	0.1111	<i>0.3509</i>	0.1640	0.5223	0.5107	0.6162	0.3679
Industrial training	0.3229	0.1042	0.4682	0.1550	0.7740	0.4846	1.0380	0.3500
Full-time vocational school	0.8186	0.1923	1.0866	0.2239	1.5601	0.8076	<i>1.1518</i>	0.5658
Technical school	0.8768	0.1338	1.0290	0.1791	0.9645	0.6850	1.6763	0.4136
Polytechnic	1.1698	0.2657	0.6220	0.3315	–	–	1.4532	0.8711
College, University	0.7909	0.1961	0.9003	0.2259	2.0844	1.0417	1.7580	0.5851
Occupational group								
Plant cultivation, breeding, fishery	0.2647	0.0959	0.1891	0.1247	0.4605	0.4937	-0.0783	0.3578
Mining, mineral extraction	–	–	–	–	–	–	–	–
Manufacturing	Ref.		Ref.		Ref.		Ref.	
Technical professions	0.3947	0.1165	0.1993	0.1373	1.1130	0.5869	0.6039	0.3457
Service professions	-0.0181	0.0548	0.0205	0.0718	0.1787	0.2438	0.1047	0.1530
Other professions	-1.2045	0.4590	<i>-1.6496</i>	0.7227	<i>-1.1534</i>	0.5723	-1.1029	0.3940
Professional rank								
Worker, not skilled worker	Ref.		Ref.		Ref.		Ref.	
Worker, skilled worker	0.1086	0.0749	0.0792	0.0900	0.4266	0.3127	0.1689	0.2051
White-collar worker, simple occupations	0.1047	0.0865	<i>0.2467</i>	0.1020	0.8961	0.4137	0.3767	0.2532
White-collar worker, advanced occupations	-0.2570	0.1618	-0.0078	0.2035	0.6756	1.1003	0.7158	0.4599
Other	-0.0286	0.0602	0.0828	0.0762	-0.1914	0.2424	-0.0977	0.1621
Qualification (with work experience)	-0.1475	0.0757	<i>-0.1722</i>	0.0869	0.0118	0.2266	-0.0730	0.1759
Career Variables								
Duration of last employment (months)	-0.0023	0.0003	-0.0022	0.0006	<i>-0.0036</i>	0.0015	-0.0030	0.0008
Duration of unemployment (weeks)								
Up to 13 weeks	–	–	Ref.		Ref.		Ref.	
Between 13 and 52 weeks	–	–	0.1092	0.0858	-0.1973	0.2680	0.0806	0.1775
More than 52 weeks	–	–	-0.0971	0.0853	-0.4276	0.2680	-0.2595	0.1770
Number of placement propositions	0.0751	0.0044			0.1030	0.0194	0.1177	0.0119
Last contact to job center (weeks)	-0.0548	0.0113	-0.0448	0.0145	-0.2311	0.0587	-0.0845	0.0308
Rehabilitation attendant	0.0394	0.1473	0.0743	0.2060	–	–	0.3679	0.1259
Placement restrictions	-0.4019	0.1179	-0.0938	0.1520	0.0799	0.2267	–	–
Programme before unemployment								
No further education or programme	Ref.		Ref.		Ref.		Ref.	
Further education compl., cont. education	0.3857	0.0589	0.3756	0.0687	0.2770	0.4142	0.5584	0.1756
Further education compl., voc. adjustment	0.6921	0.1017	0.3540	0.1173	0.2049	0.6470	0.5412	0.3001
Job-preparative measure	0.7818	0.6239	0.8678	0.6220	–	–	–	–
Job creation scheme	1.1226	0.0590	1.3201	0.0706	1.3785	0.2465	1.5575	0.1570
Rehabilitation measure	0.2434	0.4755	-0.0416	0.6348	0.5243	0.2984	-0.2402	0.4080
Regional Context Variables								
Cluster Ia	<i>0.4612</i>	0.1952	<i>0.5028</i>	0.2108	-0.1445	0.5643	-0.3686	0.3380
Cluster Ib	0.3262	0.1920	0.0424	0.2053	0.1129	0.5345	-0.4145	0.3203
Cluster Ic	0.1912	0.2033	-0.0727	0.2160	0.3546	0.5734	-0.0070	0.3423
Cluster II	Ref.		Ref.		Ref.		Ref.	

Bold letters indicate significance at the 1% level. *Italic* letters refer to the 5% level.– not included in the estimation/ no observation. Ref. denotes the reference category.

¹ DoR = Degree of restriction

² People with accepted degree of restriction, but no equalisation to other persons with the same DoR.

Tab. 15: ESTIMATION RESULTS OF THE LOGIT-MODELS FOR THE PROPENSITY SCORE FOR WOMEN IN EAST GERMANY

Variable	ALMP part.		Target Score=0		Target Score=1		Target Score=2	
	Coeff.	S.E.	Coeff.	S.E.	Coeff.	S.E.	Coeff.	S.E.
Constant	-7.3543	0.6275	-3.7688	2.2948	-9.7937	1.0491	-10.3091	0.7327
Socio-Demographic Variables								
Age	0.1833	0.0203	-0.0896	0.1151	0.2138	0.0405	0.3020	0.0273
Age(squared)	-0.0019	0.0002	0.0016	0.0015	-0.0026	0.0005	-0.0036	0.0003
Married	0.1552	0.0465	0.0821	0.1429	0.1024	0.0725	0.0391	0.0584
Number of children	-0.0450	0.0256	0.1926	0.0684	-0.0315	0.0357	-0.0400	0.0314
German	<i>0.9316</i>	0.3952	–	–	0.1887	0.3497	0.6934	0.4241
Health restrictions								
No health restrictions	Ref.		Ref.		Ref.		Ref.	
Acc. DoR, ¹ 80% and over	1.3778	0.4208	–	–	1.5039	0.5690	1.1216	0.4316
Acc. DoR, 50% to under 80%	0.6615	0.1877	2.1834	0.6706	0.8030	0.3261	0.8575	0.2086
Acc. DoR, 30% to under 50%	0.8842	0.2807	–	–	0.2386	0.6536	0.6925	0.3656
Acc. DoR, 30% to under 50%, no equalis. ²	-0.1998	0.2955	0.3870	1.0712	-0.1905	0.5179	0.2908	0.3040
Other health restrictions	-0.0561	0.0851	0.1333	0.2646	-0.2037	0.1386	-0.0568	0.0987
Qualification Variables								
Professional training								
Without compl. prof. training, no CSE	Ref.		Ref.		Ref.		Ref.	
Without compl. prof. training, with CSE	0.2187	0.1173	–	–	0.1501	0.3331	0.4983	0.1725
Industrial training	<i>0.2450</i>	0.1103	-0.9665	0.6323	0.3714	0.3276	0.9045	0.1751
Full-time vocational school	0.7326	0.1877	-0.7729	0.8146	<i>0.9874</i>	0.3941	1.4513	0.2508
Technical school	0.9459	0.1305	-0.0033	0.6451	1.3011	0.3420	1.4696	0.1968
Polytechnic	0.8606	0.2319	–	–	<i>1.0864</i>	0.4466	1.9362	0.3069
College, University	0.8461	0.1719	-0.5305	0.6951	1.2193	0.3662	1.5150	0.2475
Occupational group								
Plant cultivation, breeding, fishery	0.4204	0.0880	0.0045	0.2898	0.4083	0.1364	0.3249	0.1119
Mining, mineral extraction	–	–	–	–	–	–	–	–
Manufacturing	Ref.		Ref.		Ref.		Ref.	
Technical professions	<i>0.2151</i>	0.1065	0.0668	0.3529	0.2143	0.1693	0.0291	0.1425
Service professions	<i>0.1150</i>	0.0564	0.1345	0.1737	0.0710	0.0869	-0.0484	0.0684
Other professions	-2.4967	1.0079	–	–	-2.0183	1.0131	-1.2813	0.5147
Professional rank								
Worker, not skilled worker	Ref.		Ref.		Ref.		Ref.	
Worker, skilled worker	<i>0.1685</i>	0.0713	-0.0391	0.1964	-0.1836	0.1092	0.1638	0.0898
White-collar worker, simple occupations	0.3703	0.0820	0.0097	0.2411	0.2255	0.1242	<i>0.2516</i>	0.1027
White-collar worker, advanced occupations	-0.0948	0.1713	0.0304	0.5593	0.1391	0.2542	-0.2057	0.2107
Other	-0.3845	0.0532	0.0766	0.1690	0.0276	0.0894	0.0692	0.0756
Qualification (with work experience)	-0.1155	0.0697	–	–	0.4064	0.2432	0.6318	0.1246
Career Variables								
Duration of last employment (months)	-0.0028	0.0004	-0.0032	0.0015	-0.0030	0.0006	-0.0027	0.0004
Duration of unemployment (weeks)								
Up to 13 weeks	Ref.		Ref.		Ref.		Ref.	
Between 13 and 52 weeks	-0.1212	0.0694	0.7815	0.1627	0.3235	0.0962	-0.0874	0.0851
More than 52 weeks	-0.3214	0.0691	–	–	0.5843	0.1402	-0.6910	0.1028
Number of placement propositions	0.0806	0.0043	0.4758	0.0376	0.0899	0.0099	0.0491	0.0070
Last contact to job center (weeks)	-0.0500	0.0108	0.0289	0.0381	-0.0306	0.0186	-0.0624	0.0142
Rehabilitation attendant	0.1415	0.1571	–	–	-0.1721	0.7493	-0.2613	0.2432
Placement restrictions	<i>-0.3044</i>	0.1220	–	–	-0.2999	0.2976	-0.8847	0.1649
Programme before unemployment								
No further education or programme	–	–	Ref.		Ref.		Ref.	
Further education compl., cont. education	–	–	–	–	<i>0.3056</i>	0.1396	0.0264	0.0963
Further education compl., voc. adjustment	–	–	–	–	-0.0498	0.2367	-0.1040	0.1456
Job-preparative measure	–	–	–	–	–	–	–	–
Job creation scheme	–	–	–	–	1.5409	0.1390	1.0577	0.0936
Rehabilitation measure	–	–	–	–	–	–	-0.7858	1.0412
Regional Context Variables								
Cluster Ia	0.2586	0.2121	0.3204	0.5300	1.0593	0.3699	0.2173	0.2188
Cluster Ib	0.0624	0.2089	0.1852	0.5200	0.9867	0.3658	0.0349	0.2143
Cluster Ic	-0.1564	0.2171	-0.4020	0.5754	<i>0.8377</i>	0.3803	-0.1919	0.2290
Cluster II	Ref.		Ref.		Ref.		Ref.	

Bold letters indicate significance at the 1% level. *Italic* letters refer to the 5% level. – not included in the estimation/ no observation. Ref. denotes the reference category.

¹ DoR = Degree of restriction

² People with accepted degree of restriction, but no equalisation to other persons with the same DoR.

Tab. 16: ESTIMATION RESULTS OF THE LOGIT-MODELS FOR THE PROPENSITY SCORE FOR WOMEN IN EAST GERMANY

Variable	Target Score=3		Target Score=4		Target Score=5	
	Coeff.	S.E.	Coeff.	S.E.	Coeff.	S.E.
Constant	-9.4019	0.9522	-8.2956	0.9689	-3.4244	2.3470
Socio-Demographic Variables						
Age	0.3279	0.0300	0.3380	0.0480	0.1438	0.1008
Age(squared)	-0.0040	0.0004	-0.0040	0.0006	-0.0018	0.0012
Married	0.2165	0.0704	<i>0.2306</i>	0.1132	0.2905	0.2556
Number of children	-0.0684	0.0409	-0.0369	0.0706	-0.2178	0.1927
German	1.1553	0.7320	–	–	-0.9381	1.2628
Health restrictions						
No health restrictions	Ref.		Ref.		Ref.	
Acc. DoR, ¹ 80% and over	0.5004	0.5222	<i>1.4642</i>	0.5994	0.5876	1.1427
Acc. DoR, 50% to under 80%	0.1031	0.2542	0.4059	0.3297	-0.7586	0.8327
Acc. DoR, 30% to under 50%	0.7089	0.3768	<i>1.0000</i>	0.4307	-0.2938	0.9879
Acc. DoR, 30% to under 50%, no equalis. ²	-0.1779	0.3472	-0.2638	0.4280	–	–
Other health restrictions	<i>-0.2542</i>	0.1258	-0.3546	0.1989	-0.9858	0.6646
Qualification Variables						
Professional training						
Without compl. prof. training, no CSE	Ref.		Ref.		Ref.	
Without compl. prof. training, with CSE	0.2433	0.1462	0.1489	0.1721	0.1807	0.3631
Industrial training	0.9678	0.1551	0.9351	0.2041	0.4043	0.4438
Full-time vocational school	1.3885	0.2807	1.5385	0.4891	–	–
Technical school	1.6689	0.1928	0.9147	0.3320	0.6527	0.8928
Polytechnic	<i>0.9845</i>	0.4491	2.2644	0.7013	–	–
College, University	1.5700	0.2741	<i>1.2290</i>	0.5758	–	–
Occupational group						
Plant cultivation, breeding, fishery	0.0744	0.1443	0.3742	0.2188	0.4983	0.6275
Mining, mineral extraction	–	–	–	–	–	–
Manufacturing	Ref.		Ref.		Ref.	
Technical professions	0.3159	0.1637	0.8039	0.2839	1.0893	0.6660
Service professions	0.0388	0.0827	-0.0562	0.1293	0.4940	0.3101
Other professions	<i>-1.0677</i>	0.5161	-1.2010	0.7368	0.1282	0.8041
Professional rank						
Worker, not skilled worker	Ref.		Ref.		Ref.	
Worker, skilled worker	<i>0.2333</i>	0.1096	0.2948	0.1844	0.7054	0.3654
White-collar worker, simple occupations	<i>0.2536</i>	0.1223	<i>0.5018</i>	0.2143	-0.4972	0.6897
White-collar worker, advanced occupations	0.1020	0.2281	-0.5324	0.4396	0.8921	1.2048
Other	0.0613	0.0903	0.1888	0.1453	0.0524	0.3099
Qualification (with work experience)	0.4693	0.1144	0.5986	0.1706	-0.2520	0.2902
Career Variables						
Duration of last employment (months)	-0.0026	0.0005	-0.0011	0.0008	-0.0045	0.0023
Duration of unemployment (weeks)						
Up to 13 weeks	Ref.		Ref.		Ref.	
Between 13 and 52 weeks	-0.2099	0.1285	-0.3230	0.2729	-0.7341	0.5949
More than 52 weeks	-1.0925	0.1362	-1.5612	0.2742	-0.8532	0.5495
Number of placement propositions	0.0392	0.0077	0.0461	0.0122	0.0392	0.0271
Last contact to job center (weeks)	-0.1073	0.0176	-0.0142	0.0242	-0.2505	0.0760
Rehabilitation attendant	-0.6310	0.2032	-0.2549	0.2324	0.0968	0.3644
Placement restrictions	-0.8055	0.1704	-1.0862	0.2418	0.0211	0.6638
Programme before unemployment						
No further education or programme	Ref.		Ref.		Ref.	
Further education compl., cont. education	-0.2280	0.1136	-0.1241	0.2088	0.7459	0.4421
Further education compl., voc. adjustment	-0.0454	0.1499	0.1614	0.2658	0.8615	0.5636
Job-preparative measure	-0.9887	1.0263	0.1747	0.8019	1.0704	1.2199
Job creation scheme	0.7500	0.1114	0.8692	0.2045	1.4599	0.4315
Rehabilitation measure	-0.0674	0.4974	-0.2202	0.4681	0.0743	0.6860
Regional Context Variables						
Cluster Ia	-0.3988	0.2204	-0.2230	0.3446	-0.2794	0.8194
Cluster Ib	-0.6045	0.2136	-0.5581	0.3323	-0.1361	0.7871
Cluster Ic	-0.7589	0.2305	-0.4487	0.3536	0.0587	0.8278
Cluster II	Ref.		Ref.		Ref.	

Bold letters indicate significance at the 1% level. *Italic* letters refer to the 5% level. – not included in the estimation/ no observation. Ref. denotes the reference category.

¹ DoR = Degree of restriction

² People with accepted degree of restriction, but no equalisation to other persons with the same DoR.

2 Means of Standardised Biases for Main Groups, Selected Target Groups and Target Scores

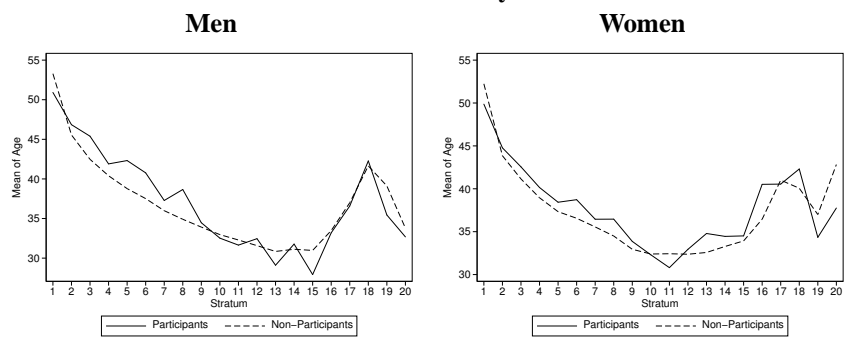
Tab. 17: RESULTS OF THE CALCULATIONS FOR THE MEANS OF THE STANDARDISED BIASES BEFORE AND AFTER MATCHING

West	Men		Women	
	before	after	before	after
Main Group	14.62	2.51	16.08	3.20
TARGET GROUP				
Age < 25	10.48	3.08	12.50	6.82
Age > 50	17.82	5.83	20.48	6.62
Without professional training	14.31	3.29	16.79	4.25
Without work experience	14.02	5.69	15.93	6.36
Long-term unemployed (more than 52 weeks)	17.77	3.06	19.13	4.18
Number of placement propositions	8.28	1.95	11.42	4.00
Vocational rehabilitation	18.13	8.45	23.96	16.31
Placement restrictions	19.29	4.61	26.99	4.99
Participation in ALMP before unemployment	18.59	6.46	16.93	8.80
TARGET SCORES				
0	15.58	10.10	14.16	6.73
1	10.51	3.93	14.25	5.79
2	15.30	2.42	16.36	4.51
3	21.40	3.72	25.06	4.42
4	26.25	3.81	31.58	5.68
5 and more	24.90	11.65	27.99	29.14

East	Men		Women	
	before	after	before	after
Main Group	12.01	1.78	10.83	1.60
Target Group				
Age < 25	14.74	4.94	13.73	8.90
Age > 50	16.79	2.55	14.98	1.55
Without professional training	11.17	2.48	11.04	2.72
Without work experience	12.10	4.18	12.17	3.35
Long-term unemployed (more than 52 weeks)	13.55	2.00	11.61	1.69
Number of placement propositions	11.67	2.52	8.62	1.62
Vocational rehabilitation	12.88	4.38	15.87	5.87
Placement restrictions	15.35	3.91	18.37	3.11
Participation in ALMP before unemployment	13.20	4.82	10.62	3.08
Target Scores				
0	15.71	7.41	7.68	4.39
1	9.92	3.56	9.68	2.48
2	12.61	2.78	12.85	2.49
3	17.56	3.12	15.65	2.26
4	18.91	3.75	18.04	2.14
5 and more	16.80	4.69	22.51	8.84

Mean of Standardised Bias calculated as mean of the single characteristics' standardised biases.

Fig. 1: Balancing of AGE within Strata
West Germany



East Germany

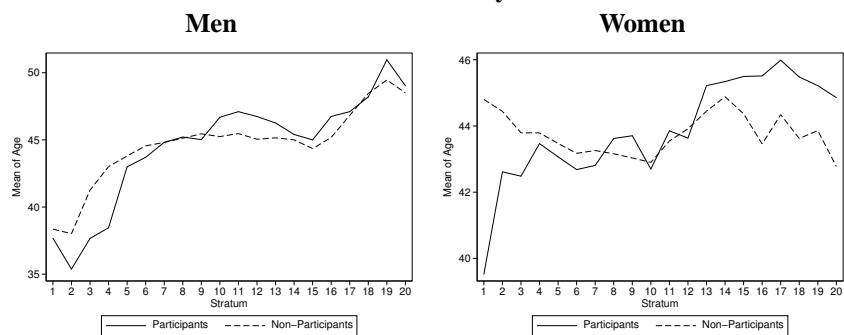
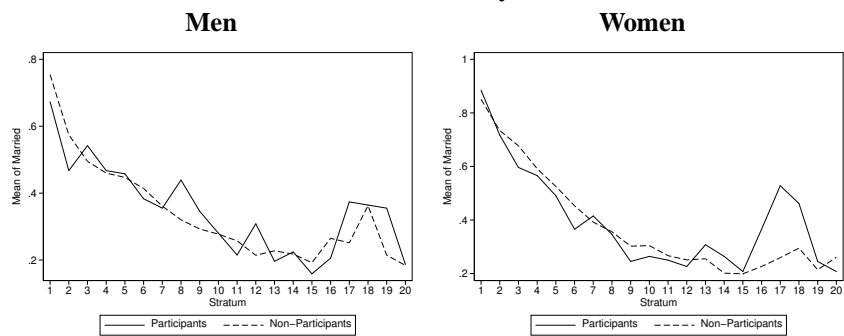


Fig. 2: Balancing of MARITAL STATUS within Strata
West Germany



East Germany

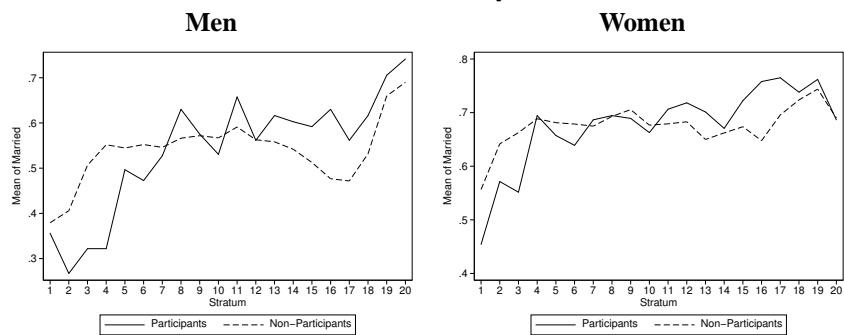
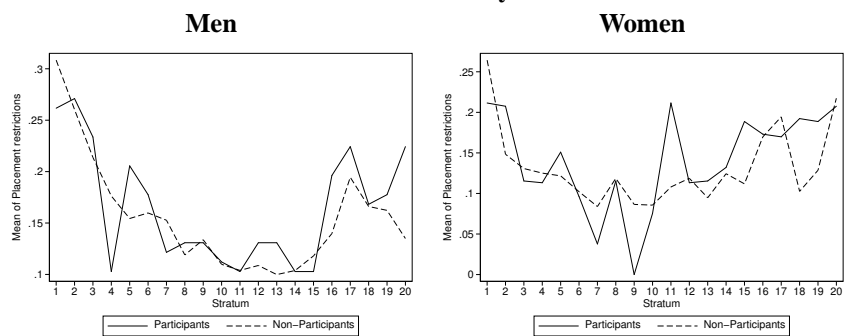


Fig. 3: Balancing of PLACEMENT RESTRICTIONS within Strata
West Germany



East Germany

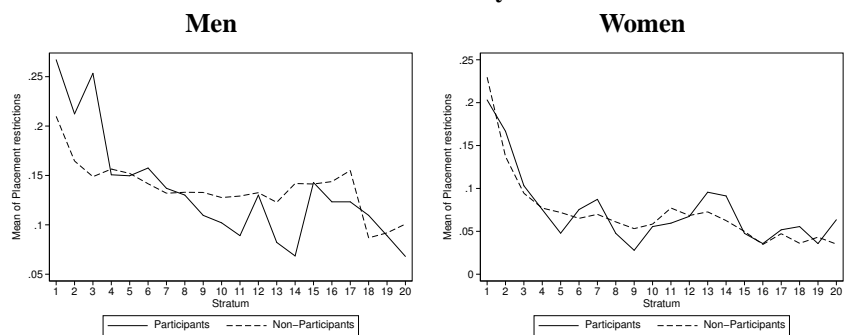
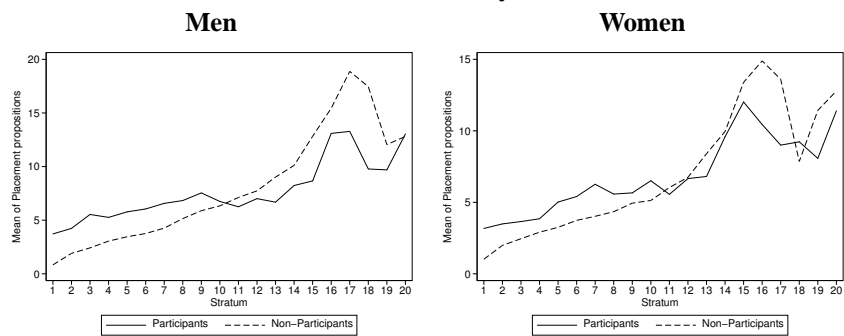


Fig. 4: Balancing of NO OF PLACEMENT PROPOSITIONS within Strata
West Germany



East Germany

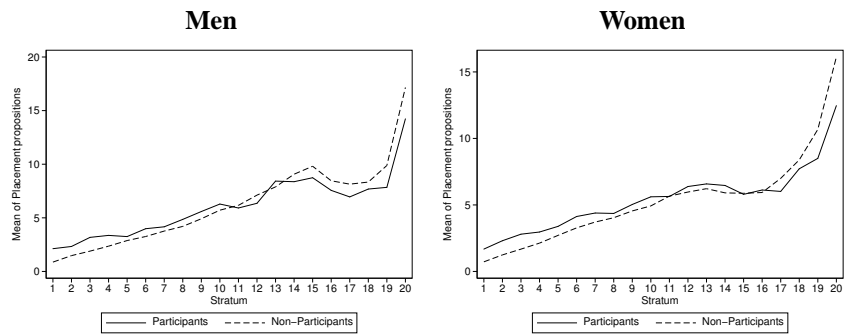


Fig. 5: Balancing of DURATION OF LAST EMPLOYMENT within Strata West Germany

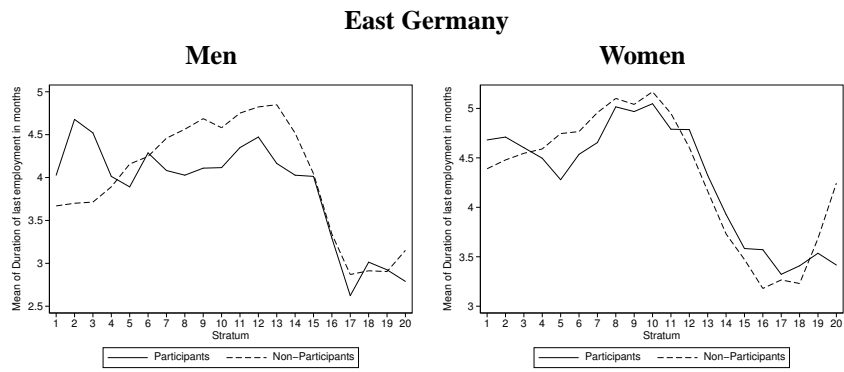
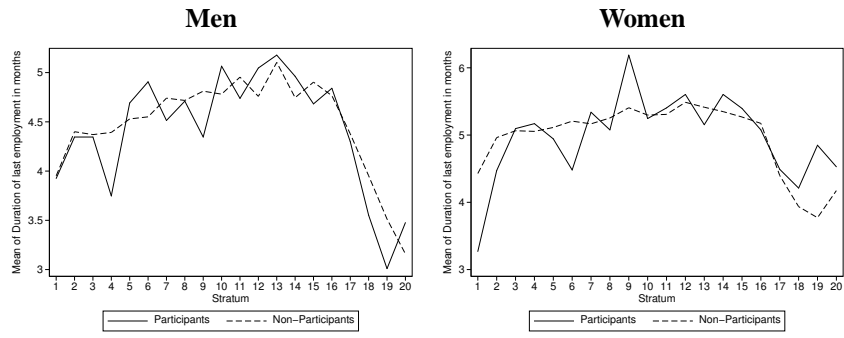


Fig. 6: Balancing of JOB CREATION SCHEME within Strata West Germany

